

SCHEDULE OF FASTENERS								
REF.	SIZE	TYPE	LENGTH (mm)	GRADE	NUT, No OFF & GRADE	WASHERS, No AND FORM	TORQUE (Nm)	FINISH
GF214	M16	SETSCREW	35	8.8	GF174	GF163 FORM 'C'	70-140	SPUN GALVANISED
GF216	M16	SETSCREW	65	8.8	GF174	GF163 FORM 'C'	70-140	SPUN GALVANISED
GF268	M20	SETSCREW	50	8.8	GF243	2 X GF233 FORM 'A'	100-120	SPUN GALVANISED
GF200	M16	SETSCREW	100	8.8	GF174	GF163 FORM 'C'	70-140	SPUN GALVANISED

07	29.11.24	LOGO UPDATED	H.B
06	12.01.22	TITLE BLOCK REVISED	A.D
05	26.08.21	TORQUE VALUES REVISED	M.T
04	26.07.21	DESCRIPTION BOX CHANGED	A.D
03	17.10.18	DETAILS ADDED	M.T
02	30.01.17	DETAILS REVISED	M.T
1.4	18.01.17	PRODUCT CODES REVISED	L.L
REV#	DATE	DETAILS	INITIAL

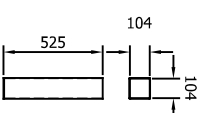
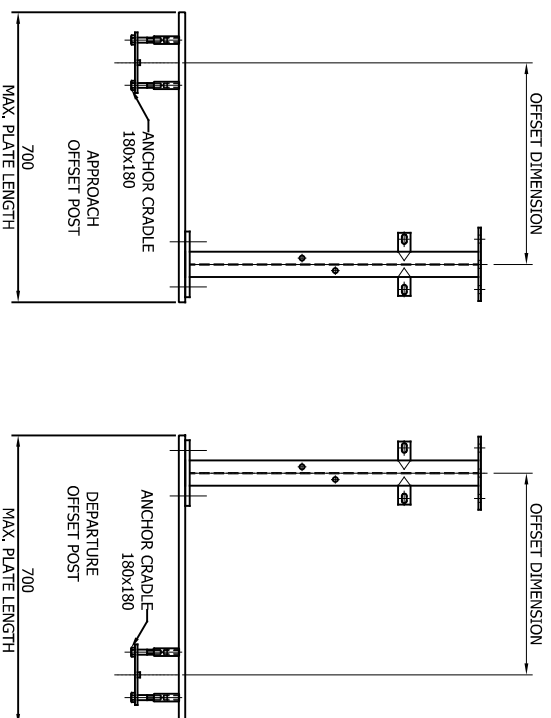
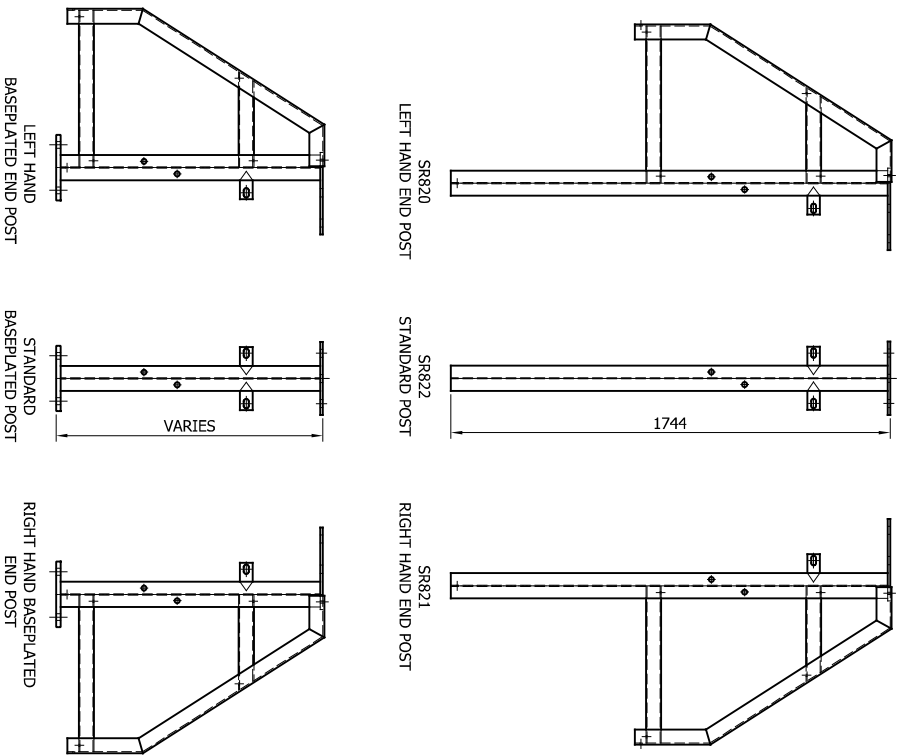
MegaGuard

H2 W1 VI 3

COMPONENTS _SCHEMATIC



CONCORD HOUSE,
 BESSEMER WAY, SCUNTHORPE,
 NORTH LINCOLNSHIRE, DN15 8XE
 t: 01774 289119
 FOR TECHNICAL ASSISTANCE CONTACT
 e: john.cudlipp@saferoad.co.uk



SR825 - POST SOCKET

06	29.11.24	LOGO UPDATED	H.B
05	27.07.21	DETAILS REVISED	M.T
04	27.05.21	DETAILS REVISED	M.T
03	10.03.17	CRADLE DETAIL REVISED	M.T
02	30.01.17	DETAILS REVISED	M.T
1.4	18.01.17	PRODUCT CODES REVISED	L.L
REV#	DATE	DETAILS	INITIAL

MegaGuard

H2 W1 VI 1

ALTERNATIVE POST TYPES



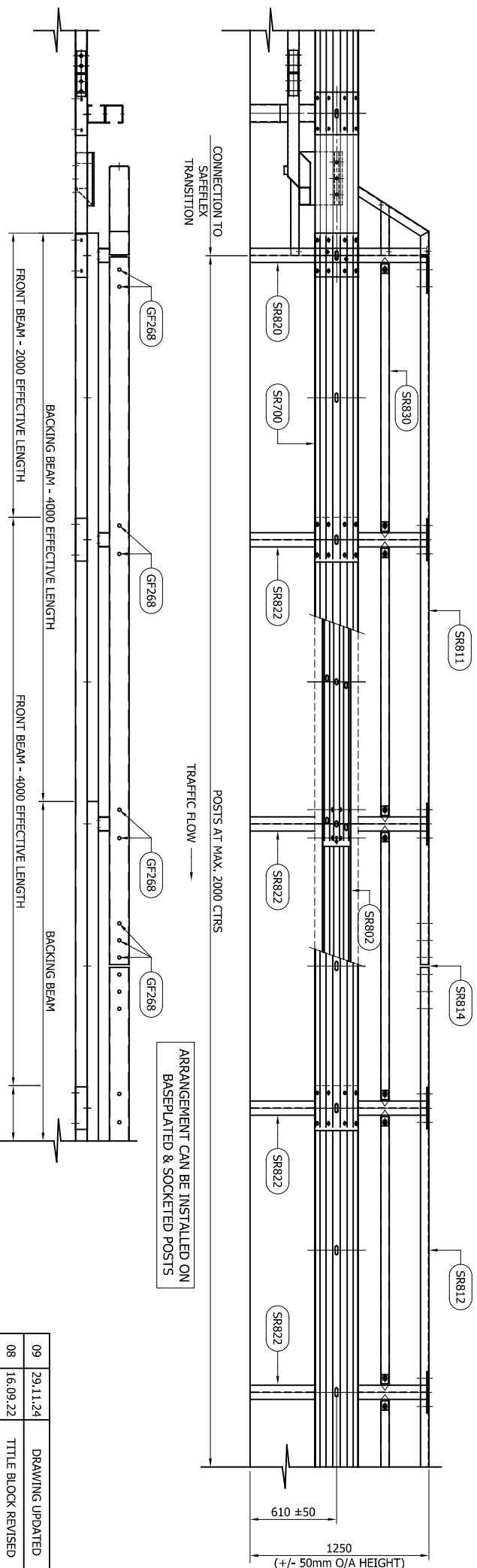
CONCORD HOUSE,
 BESSEMER WAY, SCUNTHORPE,
 NORTH LINCOLNSHIRE, DN15 8XE
 t: 01724 289119
 FOR TECHNICAL ASSISTANCE CONTACT
 e: john.cudlipp@saferoad.co.uk

DRAWING NUMBER:

H2W1-GA-01

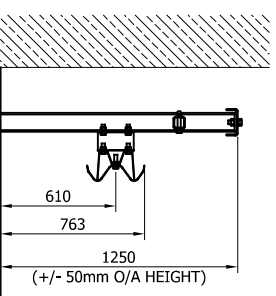
REV#:

06



SYSTEM COMPONENT SCHEDULE - QUANTITIES / 4m BEAM		
SAFEROAD UK PART NUMBER	DESCRIPTION	QUANTITY
SR822	STANDARD POST	2
SR820	LEFT HAND END POST	0 (+1)
SR821	RIGHT HAND END POST	0 (+1)
SR700	FRONT BEAM	1 (+2)
SR802	BACKING BEAM	1 (+2)
SR831	POST SPACER BRACKET	2 (+1)
SR812	STANDARD TOP RAIL	1
SR811	END POST TOP RAIL	0 (+1)
SR814	TOP RAIL FISH PLATE	1 (+1)
SR830	STANDARD INTERMEDIATE RAIL	2
SR840	FRONT BEAM WASHER PLATE	2 (+1)

- GENERAL NOTES:
1. THIS SYSTEM IS NOT SUITABLE FOR INSTALLATIONS OF A RADIUS LESS THAN 80m.
 2. FOR FURTHER DETAILS ON CONNECTION TO SAFEFLEX TRANSITION, PLEASE SEE H2W1-GA-22 & 23



REV	DATE	DETAILS	INITIAL
09	29.11.24	DRAWING UPDATED	H.B
08	16.09.22	TITLE BLOCK REVISED	A.D
07	12.08.22	TEXT REMOVED	A.D
06	23.09.21	TOLERANCE HEIGHT OF BEAM CHANGED FROM +/-30 TO +/-50	A.D
05	26.07.21	HEIGHT NOTE REVISED	A.D
04	30.08.19	DRG. REF REMOVED	M.T
03	10.03.17	FIXING CODES CORRECTED	M.T
02	30.01.17	DETAILS REVISED	M.T
1.3	18.01.17	PRODUCT CODES REVISED	L.L

MegaGuard
H2 W1 VI 3
 SETTING OUT GENERAL
 ARRANGEMENT - LEFT HAND END
 SHOWN

SAFEROAD

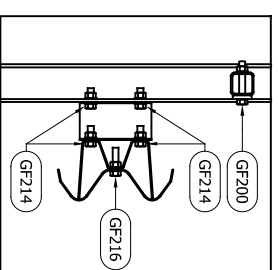
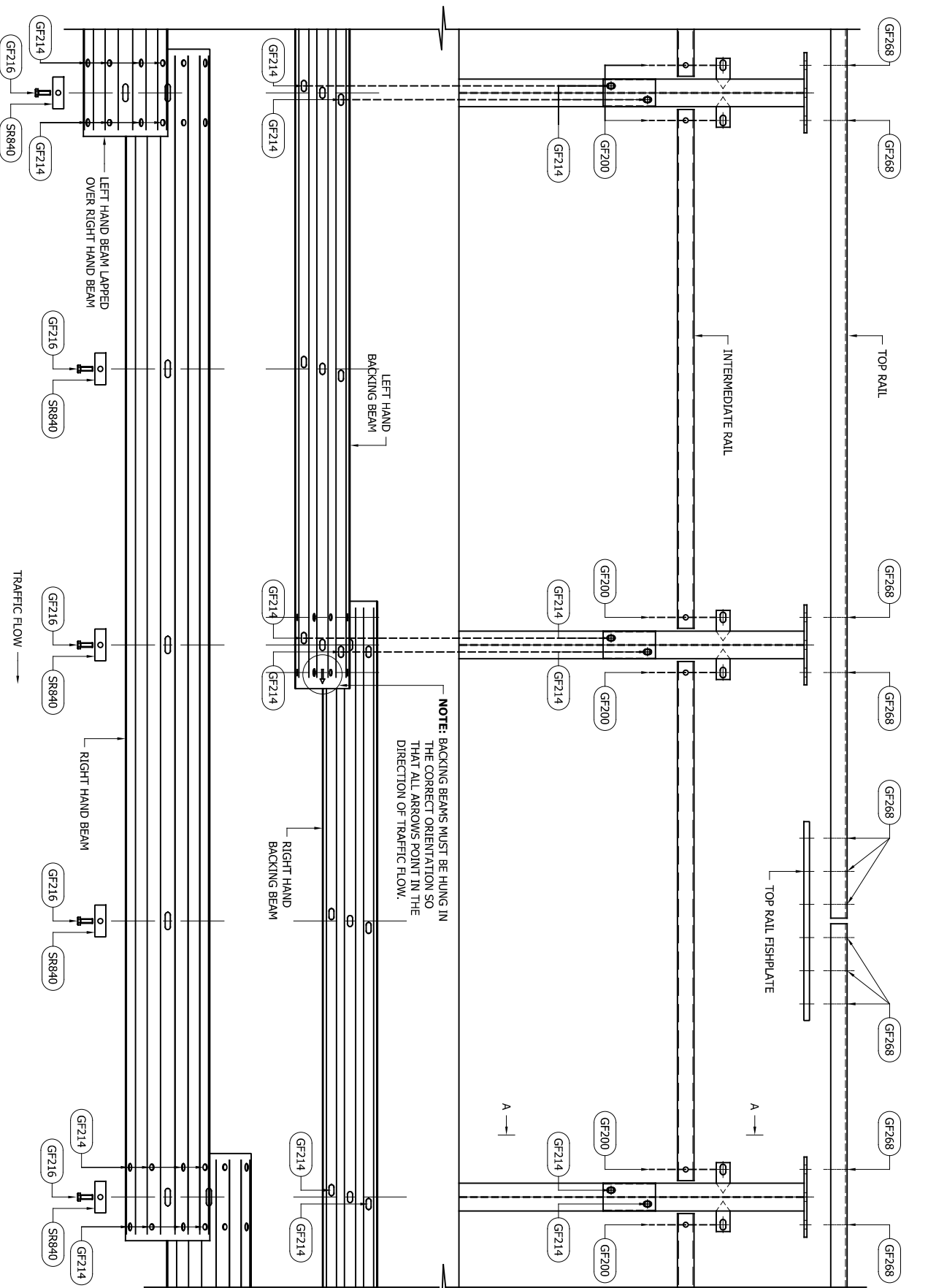
CONCORD HOUSE,
 BESSEMER WAY, SCUNTHORPE,
 NORTH LINCOLNSHIRE, DN15 8XE
 T: 01774 289119
 FOR TECHNICAL ASSISTANCE CONTACT
 e: john.cudlipp@saferoad.co.uk

DRAWING NUMBER:

H2W1-GA-02

REV:

09



SCHEDULE OF FASTENERS

REF.	SIZE	TYPE	LENGTH (mm)	GRADE	NUT, No OFF & GRADE	WASHERS, No AND FORM	TORQUE (Nm)	FINISH
GF214	M16	SETSCREW	35	8.8	GF174	GF163 FORM 'C'	70-140	SPUN GALVANISED
GF216	M16	SETSCREW	65	8.8	GF174	GF163 FORM 'C'	70-140	SPUN GALVANISED
GF268	M20	SETSCREW	50	8.8	GF243	2 x GF233 FORM 'A'	100-120	SPUN GALVANISED
GF200	M16	SETSCREW	100	8.8	GF174	GF163 FORM 'C'	70-140	SPUN GALVANISED

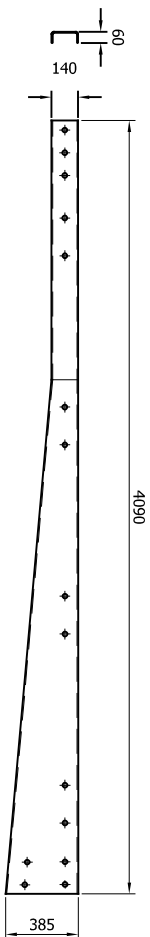
NOTE: BACKING BEAMS MUST BE HUNG IN THE CORRECT ORIENTATION SO THAT ALL ARROWS POINT IN THE DIRECTION OF TRAFFIC FLOW.

06	29.11.24	DRAWING UPDATED	H.B
05	23.09.21	CERTAIN TORQUE VALUES CHANGED	A.D
04	22.07.21	DETAILS REVISED	M.T
03	10.03.17	FIXING CODES CORRECTED	M.T
02	30.01.17	DETAILS REVISED	M.T
1.2	18.01.17	PRODUCT CODES REVISED	L.L
REV#	DATE	DETAILS	INITIAL

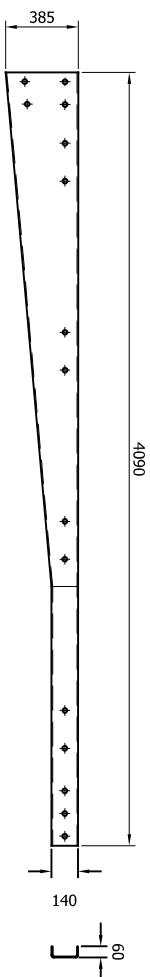
MegaGuard
H2 W1 VI 1
 GENERAL LAPPING AND BOLTING
 ARRANGEMENT

SAFEROAD
 CONCORD HOUSE,
 BESSEMER WAY, SCUNTHORPE,
 NORTH LINCOLNSHIRE, DN15 8XE
 t: 01774 289119
 FOR TECHNICAL ASSISTANCE CONTACT
 e: john.cudlipp@saferoad.co.uk

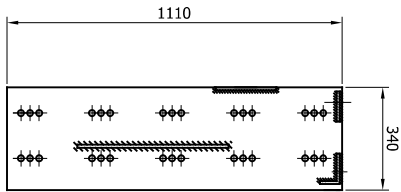
DRAWING NUMBER: **H2W1-GA-03** REV#: **06**



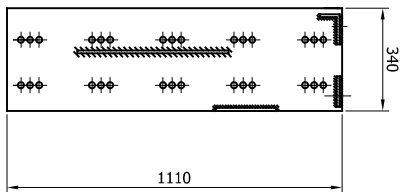
SR523 - CONNECTION TO CONCRETE TOP RAIL APPROACH



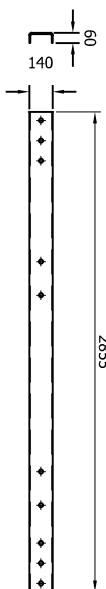
SR522 - CONNECTION TO CONCRETE TOP RAIL DEPARTURE



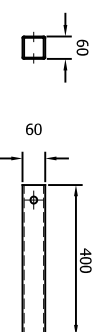
SR502 - REACTION BRACKET APPROACH (1250)



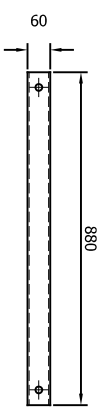
SR503 - REACTION BRACKET DEPARTURE (1250)



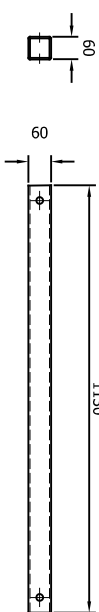
SR526 - SPECIAL TOP RAIL



SR508 - END INTERMEDIATE RAIL



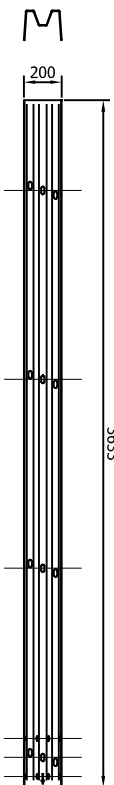
SR509 - 1000 BAY INTERMEDIATE RAIL



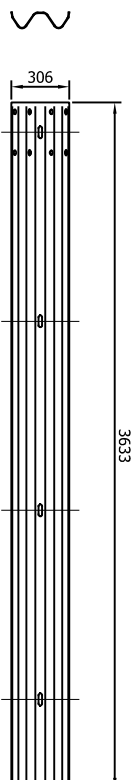
SR510 - 1250 BAY INTERMEDIATE RAIL



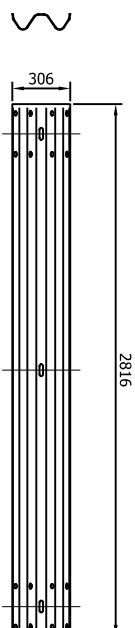
SR524 - END BACKING BEAM APPROACH



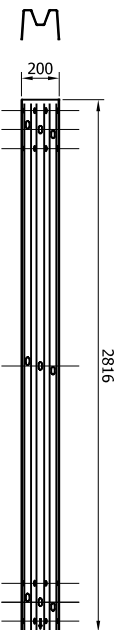
SR525 - END BACKING BEAM DEPARTURE



SR521 - END FRONT BEAM (APPLICABLE TO APPROACH & DEPARTURE)



SR520 - 2.5m FRONT BEAM



SR527 - 2.5m BACKING BEAM

REV	DATE	DETAILS	INITIAL
07	29.11.24	LOGO UPDATED	H.B
06	12.10.21	TITLE BLOCK CHANGED	A.D
05	27.07.21	DETAILS REVISED	M.T
04	22.02.21	REACTION BRACKET REVISED	M.T
03	01.05.20	DETAILS UPDATED	M.T
02	06.02.19	1250 COMPONENTS ADDED	M.T
01	17.10.18	2m BACK BEAM ADDED	M.T
00	01.02.17	DRAWING CREATED	M.T

MegaGuard
H2 W1 VI 1
 CONNECTION TO CONCRETE
 STRUCTURE
 COMPONENT SCHEMATIC

SAFEROAD

CONCORD HOUSE,
 BESSEMER WAY, SCUNTHORPE,
 NORTH LINCOLNSHIRE, DN15 8XE
 t: 01774 289119
 FOR TECHNICAL ASSISTANCE CONTACT
 e: john.cudlipp@saferoad.co.uk

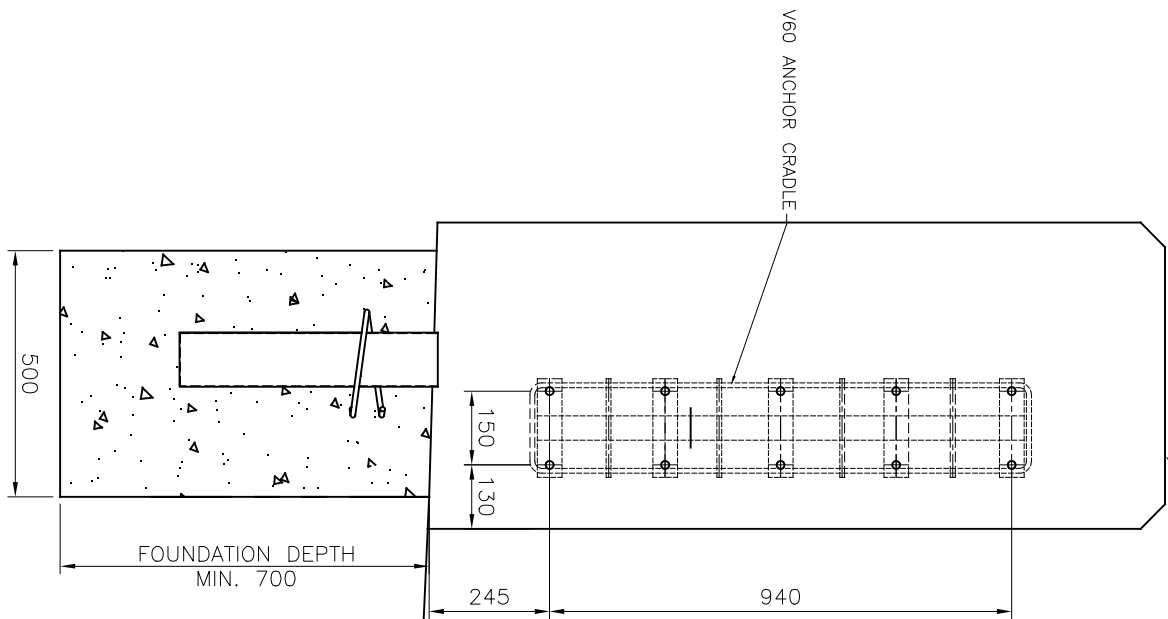
DRAWING NUMBER:
H2W1-GA-04

REV:
07

CONCRETE H4g
PARAPET/SMOOTH
FACE RETAINING
WALL/SIGN GANTRY

IF THE CONCRETE STRUCTURE SET-BACK IS LESS THAN 1500mm THEN THE SYSTEM HEIGHT (+/- 50mm) IS TO BE TAKEN FROM EDGE OF PAVED AREA. IF THE CONCRETE STRUCTURE SET-BACK IS 1500mm OR MORE THAN THE SYSTEM HEIGHT (+/- 50mm) IS TO BE TAKEN FROM LOCAL/ADJACENT GROUND LEVEL.

V60 INSTALL TOLERANCES: ±50mm VERTICALLY



CONCRETE GRADE RC20/25 - ST5 IS AN ACCEPTED ALTERNATIVE PRESCRIBED CONCRETE

DETAIL FOR 1250 HIGH MEGAGUARD

SCALE: 1:16

- GENERAL NOTES:**
1. ALL DIMENSIONS IN MILLIMETRES UNLESS NOTED OTHERWISE.
 2. CONNECTION APPLICABLE TO: CONCRETE H4g PARAPET, SMOOTH FACE RETAINING WALL, SIGN GANTRY OR STRUCTURE.
 3. FOR DETAILS OF STRUCTURE ANCHORAGE, ITEM V60, SEE DRG. NO. SB/155, EXCEPT MATERIAL TO BE STAINLESS STEEL GRADE 1.4362.
 4. TOTAL LENGTH OF BARRIER TO BE AS CD 377.
 5. MINIMUM LENGTH OF FOUNDATION 6.3m. MEGAGUARD AT STANDARD 2.0 METRE POST SPACINGS OR PERMISSIBLE DEVIATIONS CAN BE INSTALLED ON SINGULAR CONCRETE FOUNDATIONS - SIZE & TYPE DETERMINED BY FLOWING THE FOUNDATION TESTING PROCEDURE.

08	19.02.25	GENERAL NOTES UPDATED	H.B
07	29.11.24	LOGO UPDATED	H.B
06	28.09.22	CONCRETE NOTES REVISED	A.D
05	20.09.22	CONCRETE NOTES REVISED	A.D
04	22.03.22	FOUNDATIONS NOTES REVISED	A.D
03	19.10.21	TITLE BLOCK REVISED	A.D
02	26.07.21	NOTE ADDED	A.D
01	21.04.21	DETAILS REVISED	M.T
00	31.10.17	DRAWING CREATED	H.B
REV	DATE	DETAILS	INITIAL

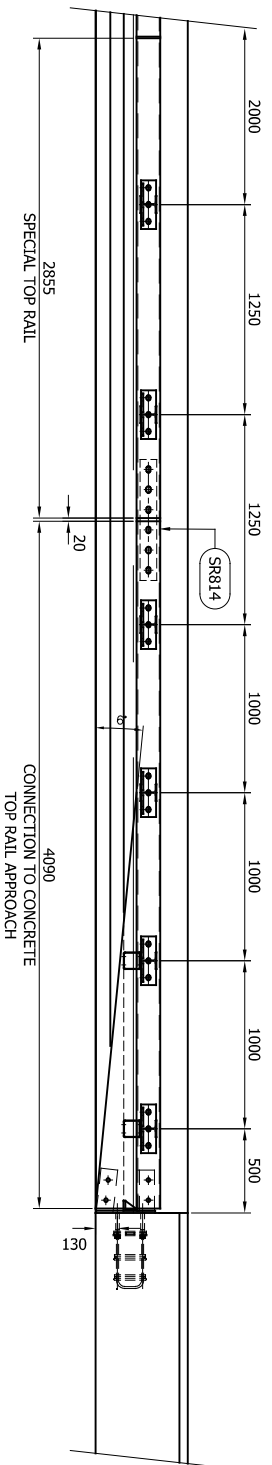
Megaguard
H2 W1 VI 1
CONNECTION TO CONCRETE
FOUNDATION DETAIL



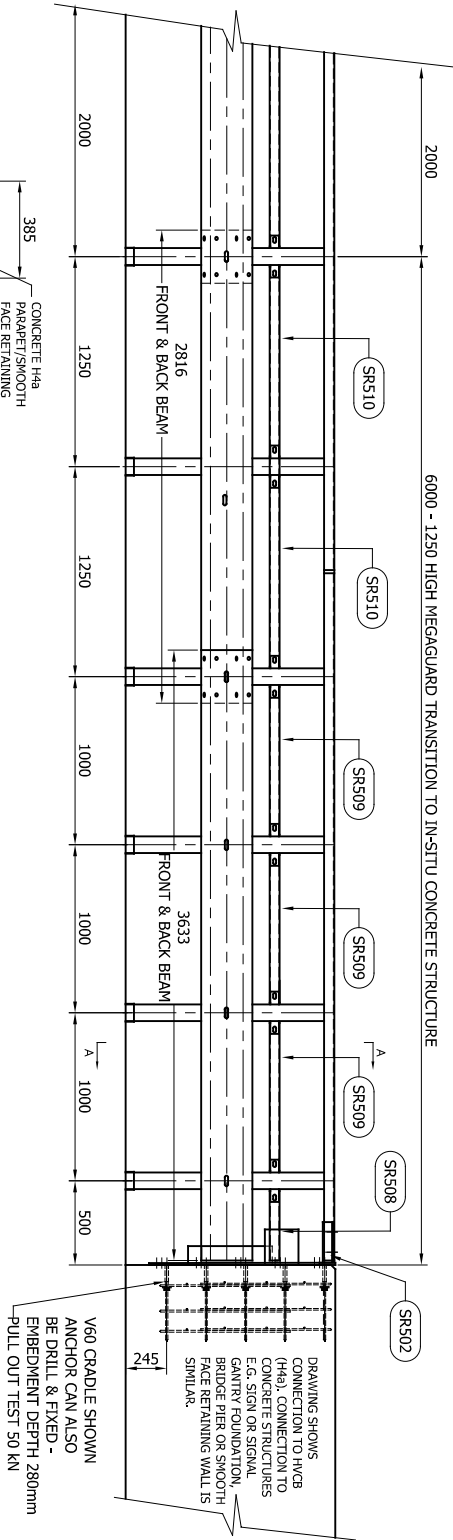
CONCORD HOUSE,
BESSEMER WAY, SCUNTHORPE,
NORTH LINCOLNSHIRE, DN15 8XE
T: 01724 289119
FOR TECHNICAL ASSISTANCE CONTACT
e: john.cudlipp@saferoad.co.uk

DRAWING NUMBER: H2W1-GA-11

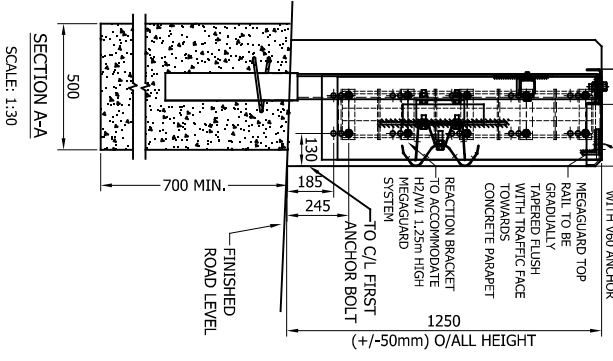
REV: 08



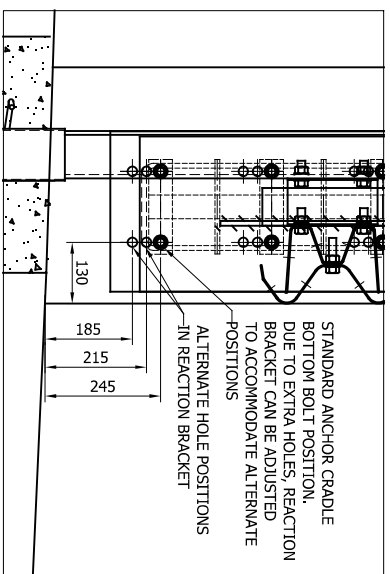
NO DEVIATIONS IN THIS TRANSITION SECTION
EITHER APPROACH OR DEPARTURE



MEGAGUARD ARRANGEMENT SHOWN WITH SOCKETED
POSTS. POSTS CAN ALSO BE BASEPLATED



SECTION A-A
SCALE: 1:30



FURTHER DETAIL OF ANCHORAGE &
REACTION BRACKET HOLES
SCALE: 1:16

- GENERAL NOTES:**
- ALL DIMENSIONS IN MILLIMETRES UNLESS NOTED OTHERWISE.
 - CONNECTION APPLICABLE TO: CONCRETE H48 PARAPET, SMOOTH FACE RETAINING WALL OR SIGN GANTRY.
 - FOR DETAILS OF STRUCTURE ANCHORAGE, ITEM V60, SEE DRG. No. SB/155, EXCEPT MATERIAL TO BE STAINLESS STEEL GRADE 1.4362.
 - MEGAGUARD TOP RAIL TO BE TAPERED TO BE FLUSH WITH TRAFFIC FACE AT END OF MEGAGUARD & CONCRETE PARAPET. DESIGN TBD.
 - TOTAL LENGTH OF BARRIER TO BE AS CD377 & LENGTH OF NEED DRAWING MR-GA-043.
 - ARRANGEMENT & REACTION BRACKET SUITABLE FOR 1.25m MIN. O/ALL HEIGHT MEGAGUARD SYSTEM.

REV	DATE	DETAILS	INITIAL
08	21.01.25	ANCHOR DEPTH UPDATED	H.B
07	29.11.24	LOGO UPDATED	H.B
06	13.07.22	SECTION A-A NOTE CHANGED	A.D
05	22.02.22	NOTES ADDED	M.T
04	26.07.21	SECTION A-A & DESCRIPTION BOX REVISED	A.D
03	25.05.21	DETAILS REVISED	M.T
02	22.02.21	REACTION BRACKET REVISED	M.T
01	30.04.20	REVISED TO NEW POST CRS	M.T
00	06.02.19	DRAWING CREATED	M.T

Megaguard

H2 W1 VI 1

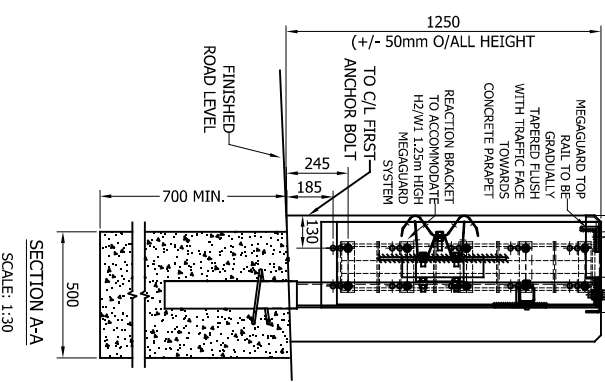
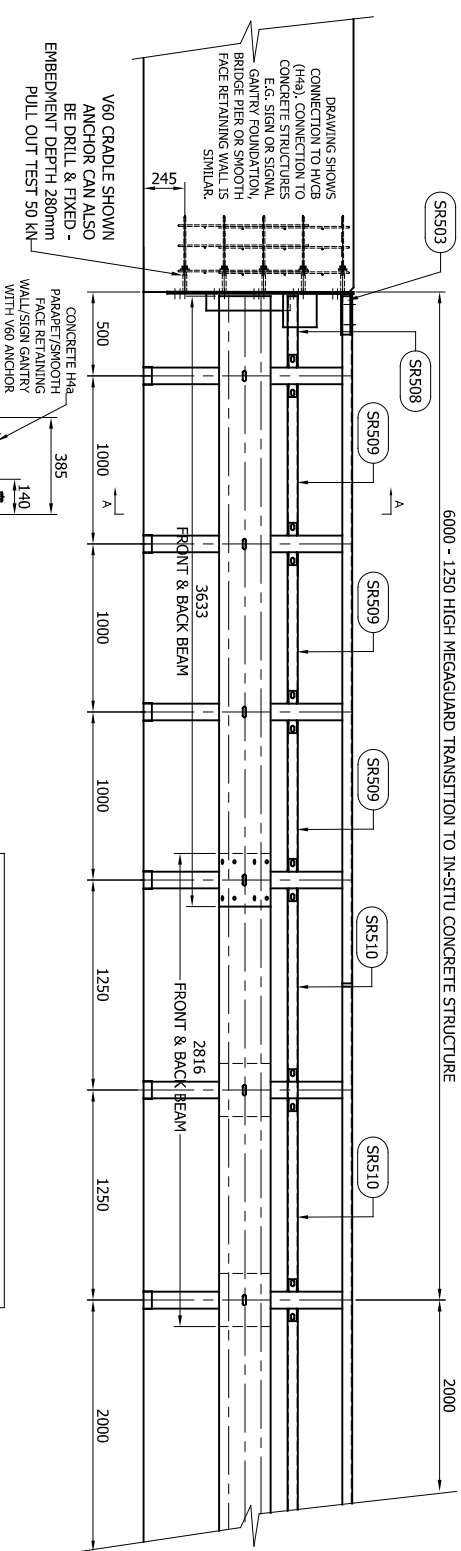
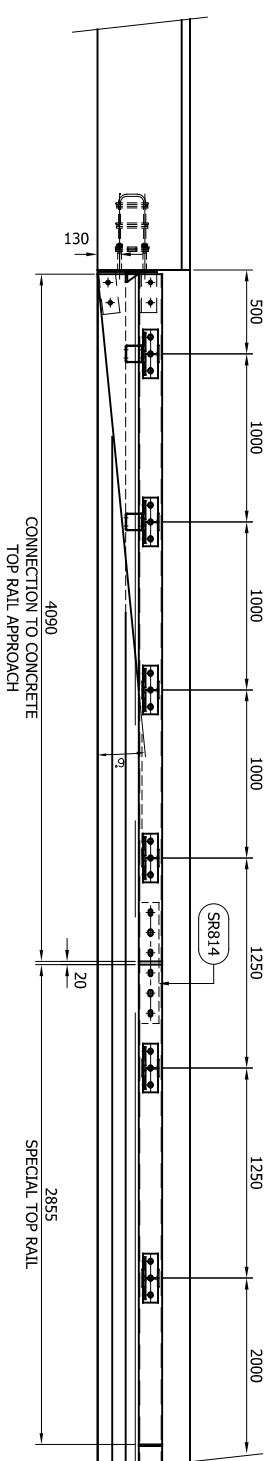
1.25m CONNECTION TO CONCRETE STRUCTURE (V60 CRADLE) APPROACH / LEFT HAND SOCKETED GENERAL ARRANGEMENT



CONCORD HOUSE,
BESSEMER WAY, SCUNTHORPE,
NORTH LINCOLNSHIRE, DN15 8XE
T: 01774 289119
FOR TECHNICAL ASSISTANCE CONTACT
e: john.cudlipp@saferoad.co.uk

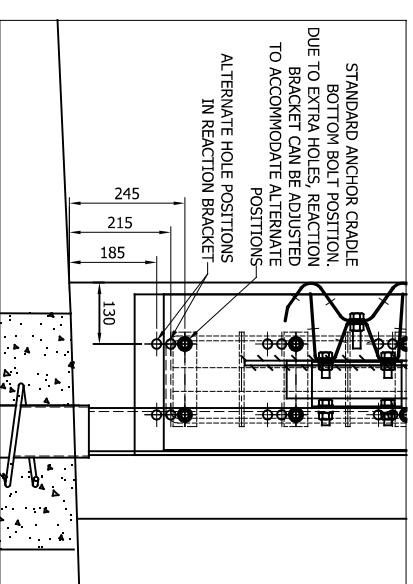
DRAWING NUMBER:
H2W1-GA-14

REV:
08



SECTION A-A
SCALE: 1:30

MEGAGUARD ARRANGEMENT SHOWN WITH SOCKETED POSTS. POSTS CAN ALSO BE BASEPLATED



FURTHER DETAIL OF ANCHORAGE & REACTION BRACKET HOLES
SCALE: 1:16

- GENERAL NOTES:**
1. ALL DIMENSIONS IN MILLIMETRES UNLESS NOTED OTHERWISE.
 2. CONNECTION APPLICABLE TO: CONCRETE H44 PARAPET, SMOOTH FACE RETAINING WALL OR SIGN GANTRY.
 3. FOR DETAILS OF STRUCTURE ANCHORAGE, ITEM V60, SEE DRG. NO. SB/155, EXCEPT MATERIAL TO BE STAINLESS STEEL GRADE 1.4362.
 4. MEGAGUARD TOP RAIL TO BE TAPERED TO BE FLUSH WITH TRAFFIC FACE AT END OF MEGAGUARD & CONCRETE PARAPET. DESIGN TBD.
 5. TOTAL LENGTH OF BARRIER TO BE AS CD377 & LENGTH OF NEED DRAWING MR-GA-043.
 6. ARRANGEMENT & REACTION BRACKET SUITABLE FOR 1.25m MIN. O/ALL HEIGHT MEGAGUARD SYSTEM.

REV#	DATE	DETAILS	INITIAL
10	21.01.25	ANCHOR DEPTH UPDATED	H.B
09	29.11.24	LOGO UPDATED	H.B
08	21.07.22	DIMENSION CHANGED	A.D
07	13.07.22	SECTION A-A NOTE CHANGED	A.D
06	22.02.22	NOTES ADDED	M.T
05	26.07.21	SECTION A-A REVISED	A.D
04	11.06.21	DETAILS REVISED	M.T
03	25.05.21	DETAILS REVISED	M.T
02	22.02.21	REACTION BRACKET REVISED	M.T
01	30.04.20	REVISED TO NEW POST CRS	M.T
00	06.02.19	DRAWING CREATED	M.T

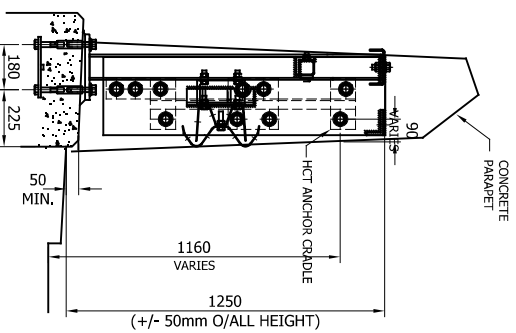
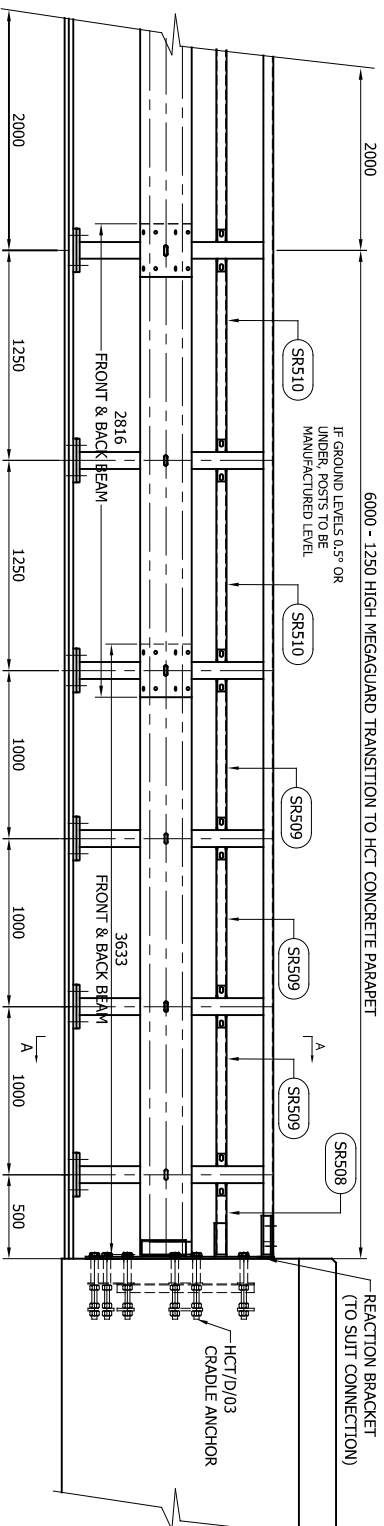
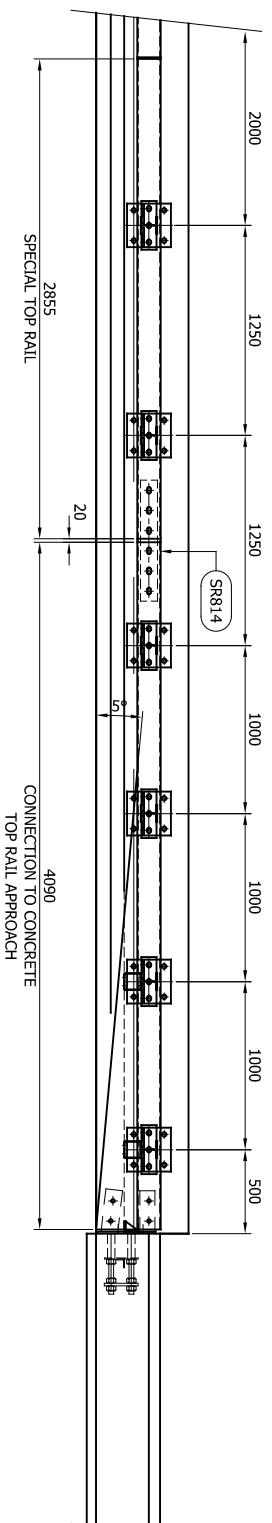
Megaguard

H2 W1 VI 1

1.25m CONNECTION TO CONCRETE STRUCTURE (V60 CRADLE) DEPARTURE / RIGHT HAND SOCKETED GENERAL ARRANGEMENT



CONCORD HOUSE,
BESSEMER WAY, SCUNTHORPE,
NORTH LINCOLNSHIRE, DN15 8XE
t: 01774 289119
FOR TECHNICAL ASSISTANCE CONTACT
e: john.cudlipp@saferoad.co.uk



SECTION A-A
SCALE: 1:30

GENERAL NOTES:

1. ALL DIMENSIONS IN MILLIMETRES UNLESS NOTED OTHERWISE.
2. CONNECTION APPLICABLE TO CONCRETE PARAPET.
3. FOR DETAILS OF STRUCTURE ANCHORAGE SEE DRG. No. HCT/D/03.
4. MEGAGUARD TOP RAIL TO BE TAPERED TO BE FLUSH WITH TRAFFIC FACE AT END OF MEGAGUARD & CONCRETE PARAPET.
5. REACTION BRACKET TO ACCOMMODATE H2/W1 MEGAGUARD SYSTEM.
6. TOTAL LENGTH OF BARRIER TO BE AS CD377 & LENGTH OF NEED DRAWING MR-GA-043.
7. HEIGHT OF MEGAGUARD SHOWN AS 1250mm HIGH, CAN ALSO BE A MAXIMUM OF 1500mm.

REV#	DATE	DETAILS	INITIAL
06	29.11.24	LOGO UPDATED	H.B
05	12.08.22	NOTE 6 CHANGED	A.D
04	22.02.22	NOTES ADDED	M.T
03	19.10.21	TITLE BLOCK REVISED	A.D
02	23.09.21	TEXT BOX REMOVED	A.D
01	26.07.21	SECTION A-A REVISED	A.D
00	25.09.19	DRAWING CREATED	M.T

Megaguard H2 W1 VI 1

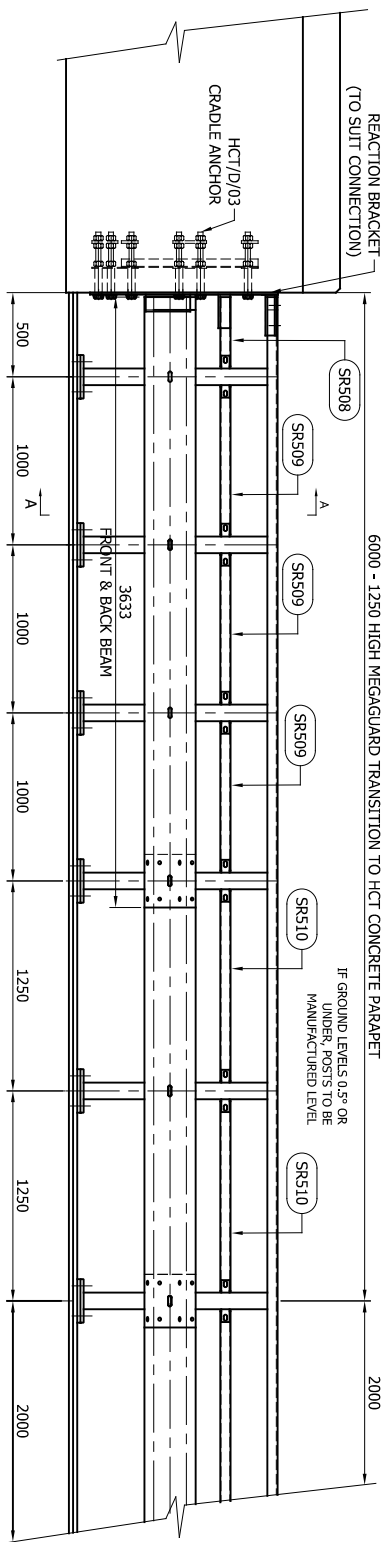
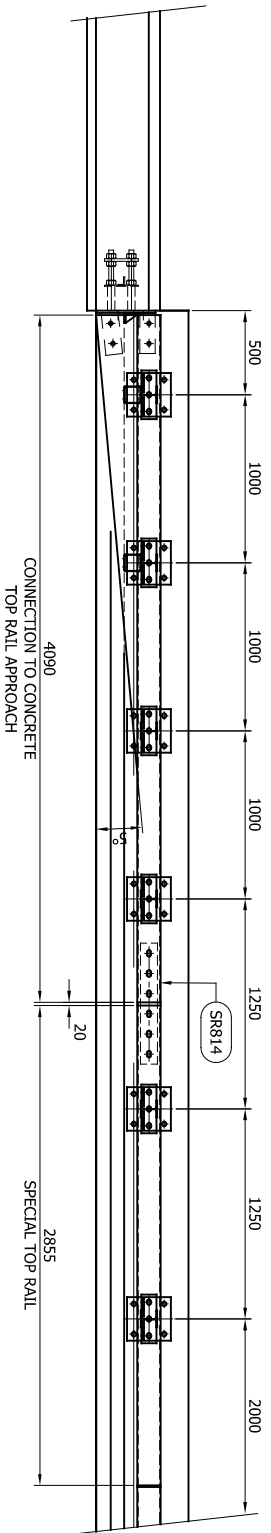
CONNECTION TO CONCRETE
PARAPET (HCT ANCHORAGE)
APPROACH / LEFT HAND
GENERAL ARRANGEMENT



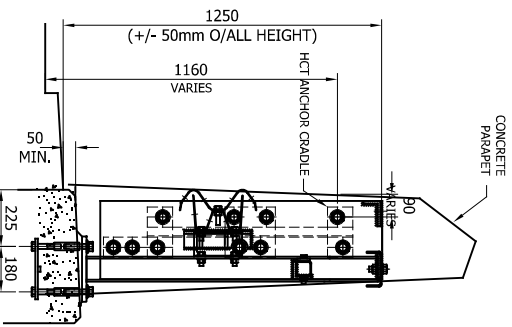
CONCORD HOUSE,
BESSEMER WAY, SCUNTHORPE,
NORTH LINCOLNSHIRE, DN15 8XE
t: 01724 289119
FOR TECHNICAL ASSISTANCE CONTACT
e: john.cudlipp@saferoad.co.uk

DRAWING NUMBER: H2W1-GA-18

REV#: 06



MEGAGUARD ARRANGEMENT SHOWN WITH BASEPLATED POSTS, POSTS CAN ALSO BE SOCKETED



SECTION A-A
SCALE: 1:30

GENERAL NOTES:

1. ALL DIMENSIONS IN MILLIMETRES UNLESS NOTED OTHERWISE.
2. CONNECTION APPLICABLE TO CONCRETE PARAPET.
3. FOR DETAILS OF STRUCTURE ANCHORAGE SEE DRG. No. HCT/D/03.
4. MEGAGUARD TOP RAIL TO BE TAPERED TO BE FLUSH WITH TRAFFIC FACE AT END OF MEGAGUARD & CONCRETE PARAPET.
5. REACTION BRACKET TO ACCOMMODATE H2/W1 MEGAGUARD SYSTEM.
6. TOTAL LENGTH OF BARRIER TO BE AS CD377 & LENGTH OF NEED DRAWING NR-GA-043.
7. HEIGHT OF MEGAGUARD SHOWN AS 1250mm HIGH, CAN ALSO BE A MAXIMUM OF 1500mm.

06	29.11.24	LOGO UPDATED	H.B
05	12.08.22	NOTE 6 CHANGED	A.D
04	22.02.22	NOTES ADDED	M.T
03	19.10.21	TITLE BOX REVISED	A.D
02	23.09.21	TEXT BOX REMOVED	A.D
01	26.07.21	SECTION A-A REVISED	A.D
00	25.09.19	DRAWING CREATED	M.T
REV#	DATE	DETAILS	INITIAL

MegaGuard H2 W1 VI 1

CONNECTION TO CONCRETE PARAPET (HCT ANCHORAGE) DEPARTURE / RIGHT HAND GENERAL ARRANGEMENT



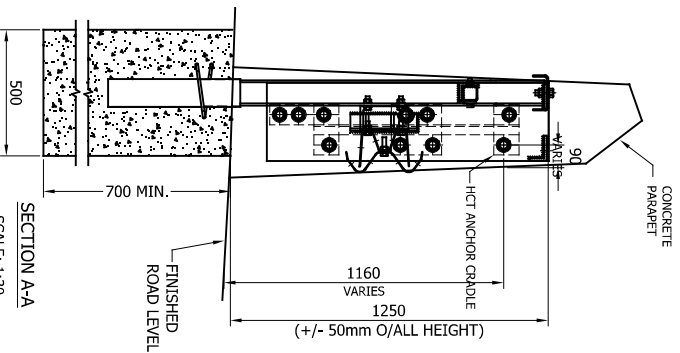
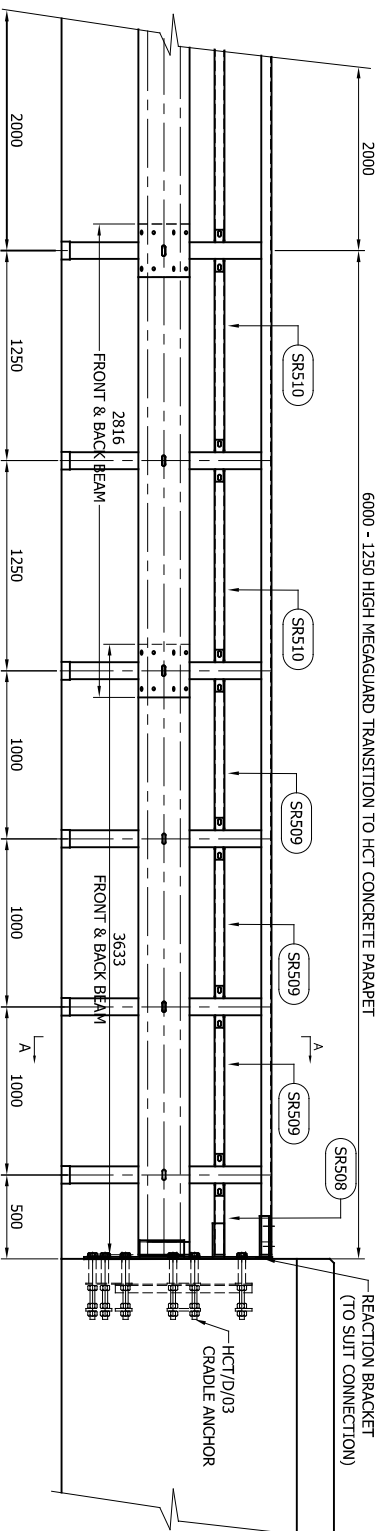
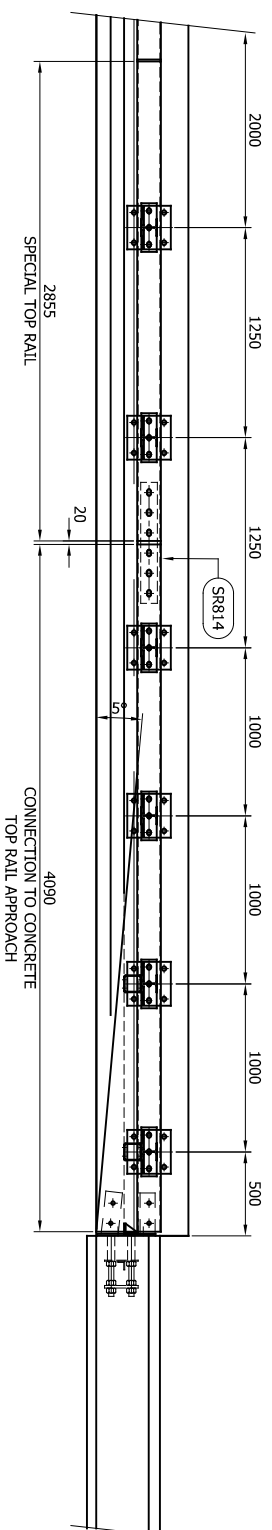
CONCORD HOUSE,
BESSEMER WAY, SCUNTHORPE,
NORTH LINCOLNSHIRE, DN15 8XE
t: 01724 289119
e: john.cudlipp@saferoad.co.uk

DRAWING NUMBER:

H2W1-GA-19

REV#:

06



GENERAL NOTES:

1. ALL DIMENSIONS IN MILLIMETRES UNLESS NOTED OTHERWISE.
2. CONNECTION APPLICABLE TO CONCRETE PARAPET.
3. FOR DETAILS OF STRUCTURE ANCHORAGE SEE DRG. No. HCT/D/03.
4. MEGAGUARD TOP RAIL TO BE TAPERED TO BE FLUSH WITH TRAFFIC FACE AT END OF MEGAGUARD & CONCRETE PARAPET.
5. REACTION BRACKET TO ACCOMMODATE H2/W1 MEGAGUARD SYSTEM.
6. TOTAL LENGTH OF BARRIER TO BE AS CD377 & LENGTH OF NEED DRAWING MR-GA-043.
7. HEIGHT OF MEGAGUARD SHOWN AS 1250mm HIGH. CAN ALSO BE A MAXIMUM OF 1500mm.

REV	DATE	DETAILS	INITIAL
04	29.11.24	LOGO UPDATED	H.B
03	22.02.22	NOTES ADDED	M.T
02	26.07.21	SECTION A-A REVISED	A.D
01	25.05.21	DETAILS REVISED	M.T
00	03.10.19	DRAWING CREATED	M.T

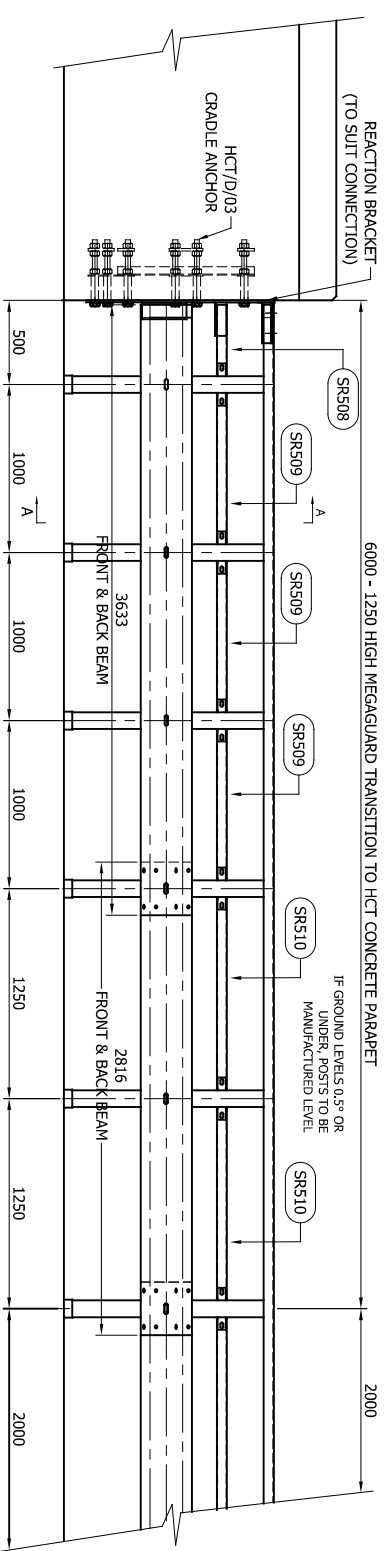
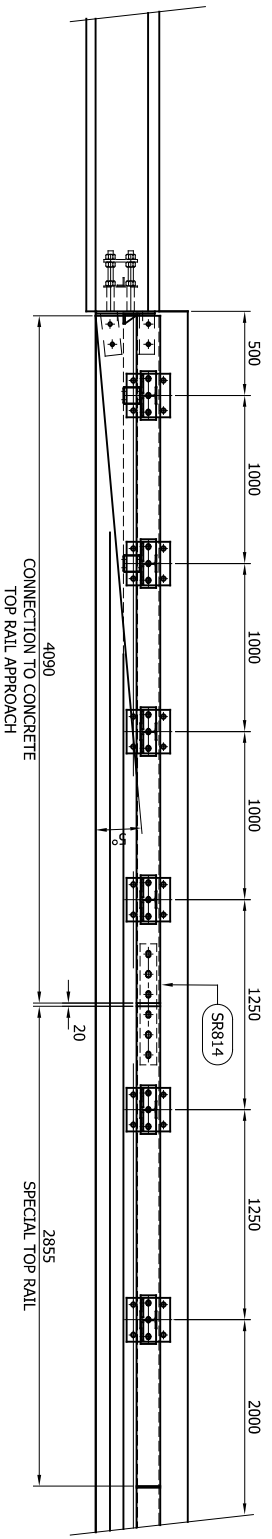
**Megaguard
H2 W1 VI 1**

CONNECTION TO CONCRETE PARAPET (HCT ANCHORAGE) APPROACH / LEFT HAND SOCKETTED GENERAL ARRANGEMENT

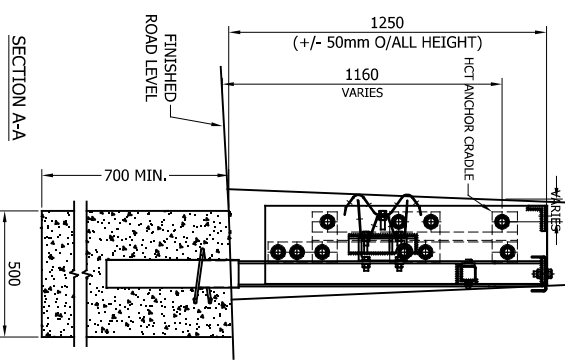


CONCORD HOUSE,
BESSEMER WAY, SCUNTHORPE,
NORTH LINCOLNSHIRE, DN15 8XE
t: 01724 289119
e: john.cudlipp@saferoad.co.uk

DRAWING NUMBER: **H2W1-GA-20** REV: **04**



MEGAGUARD ARRANGEMENT SHOWN WITH SOCKETED POSTS. POSTS CAN ALSO BE BASEPLATED



SECTION A-A
SCALE: 1:30

GENERAL NOTES:

1. ALL DIMENSIONS IN MILLIMETRES UNLESS NOTED OTHERWISE.
2. CONNECTION APPLICABLE TO CONCRETE PARAPET.
3. FOR DETAILS OF STRUCTURE ANCHORAGE SEE DRG. No. HCT/D/03.
4. MEGAGUARD TOP RAIL TO BE TAPERED TO BE FLUSH WITH TRAFFIC FACE AT END OF MEGAGUARD & CONCRETE PARAPET.
5. REACTION BRACKET TO ACCOMMODATE H2/W1 MEGAGUARD SYSTEM.
6. TOTAL LENGTH OF BARRIER TO BE AS CD377 & LENGTH OF NEED DRAWING NR-GA-043.
7. HEIGHT OF MEGAGUARD SHOWN AS 1250mm HIGH, CAN ALSO BE A MAXIMUM OF 1500mm.

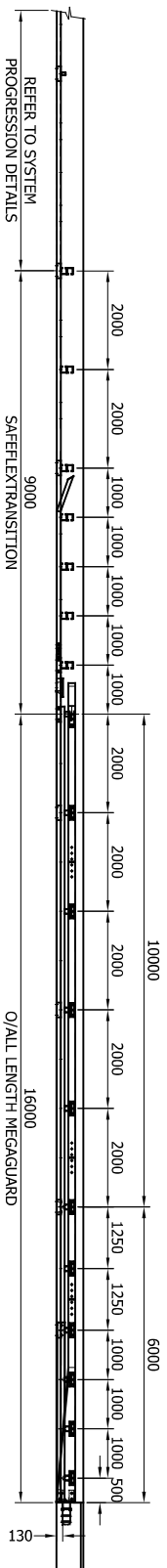
REV#	DATE	DETAILS	INITIAL
04	29.11.24	LOGO UPDATED	H.B
03	22.02.22	NOTES ADDED	M.T
02	26.07.21	SECTION A-A REVISED	A.D
01	25.05.21	DETAILS REVISED	M.T
00	03.10.19	DRAWING CREATED	M.T

**Megaguard
H2 W1 VI 1**

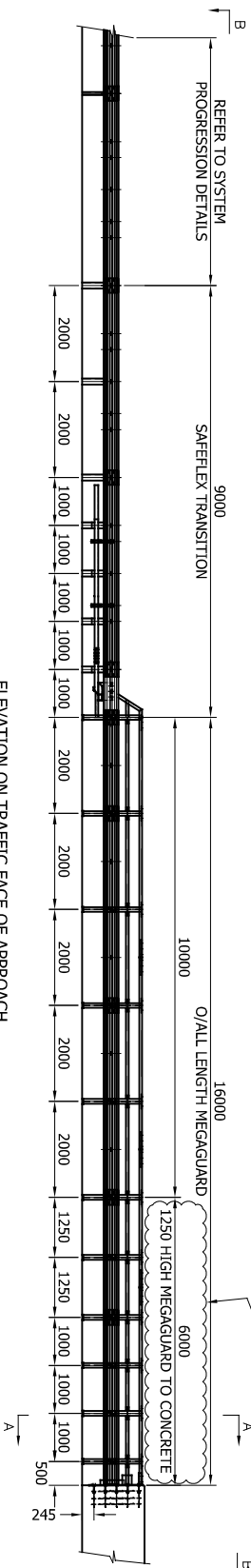
CONNECTION TO CONCRETE PARAPET (HCT ANCHORAGE) DEPARTURE / RIGHT HAND SOCKETED GENERAL ARRANGEMENT



CONCORD HOUSE,
BESSEMER WAY, SCUNTHORPE,
NORTH LINCOLNSHIRE, DN15 8XE
t: 01724 289119
e: john.cudlipp@saferoad.co.uk

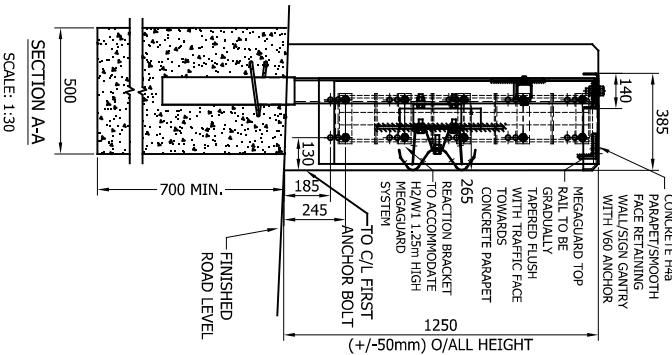


SECTION B-B
(PLAN VIEW ON CONNECTION TO SAFEFLEX TRANSITION)
SCALE: 1:150



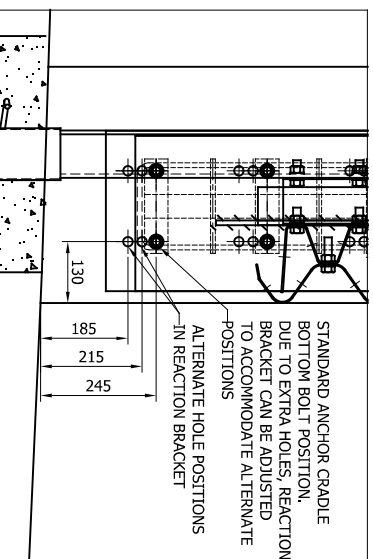
ELEVATION ON TRAFFIC FACE OF APPROACH
CONNECTION TO SAFEFLEX TRANSITION
SCALE: 1:150

SEE UK 27460 & UK 27461 FOR FURTHER DETAILS
OF MEGAGUARD CONNECTION TO SAFEFLEX TRANSITION



SECTION A-A
SCALE: 1:30

MEGAGUARD ARRANGEMENT SHOWN WITH
SOCKETED POSTS. CAN ALSO BE BASEPLATED



FURTHER DETAIL OF ANCHORAGE &
REACTION BRACKET HOLES
SCALE: 1:16

- GENERAL NOTES:**
1. ALL DIMENSIONS IN MILLIMETRES UNLESS NOTED OTHERWISE.
 2. CONNECTION APPLICABLE TO: CONCRETE H4a PARAPET, SMOOTH FACE RETAINING WALL OR SIGN GANTRY.
 3. FOR DETAILS OF STRUCTURE ANCHORAGE, ITEM V60, SEE DRG. NO. SB/155.
 4. MEGAGUARD TOP RAIL TO BE TAPERED TO BE FLUSH WITH TRAFFIC FACE AT END OF MEGAGUARD & CONCRETE PARAPET. DESIGN TBD.
 5. ARRANGEMENT & REACTION BRACKET SUITABLE FOR 1.25m MIN. O/ALL HEIGHT MEGAGUARD SYSTEM.
 6. FOR FURTHER DETAILS ON CONNECTION OF MEGAGUARD TO SAFEFLEX TRANSITION, PLEASE SEE UK 27460 & UK 27461

REV	DATE	DETAILS	INITIAL
06	25.11.24	TRANSITION UPGRADED TO SAFEFLEX	H.B
05	19.07.22	SECTION A-A NOTE CHANGED	A.D
04	22.02.22	NOTES ADDED	M.T
03	12.01.22	TITLE BLOCK REVISED	A.D
02	23.07.21	SECTION C-C & D-D ARROWS MOVED	A.D
01	22.02.21	REACTION BRACKET REVISED	M.T
00	07.05.20	DRAWING CREATED	M.T

Megaguard H2 W1

1.25m CONNECTION TO CONCRETE INTO SAFEFLEX TRANSITION APPROACH / LEFT HAND SOCKETED GENERAL ARRANGEMENT

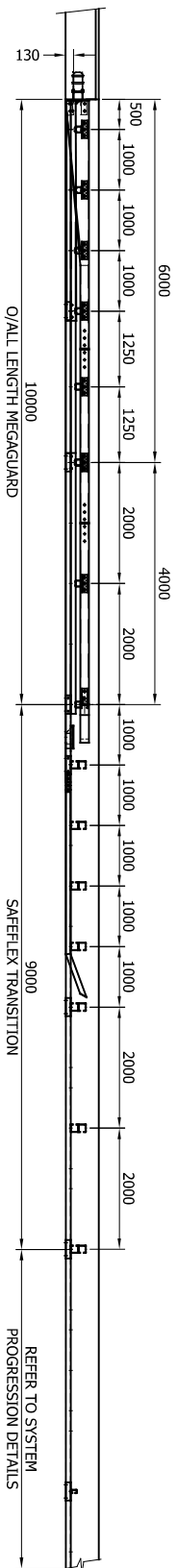


CONCORD HOUSE,
BESSEMER WAY, SCUNTHORPE,
NORTH LINCOLNSHIRE, DN15 8XE
t: 01774 289119
FOR TECHNICAL ASSISTANCE CONTACT
e: john.cudlipp@saferoad.co.uk

DRAWING NUMBER:
H2W1-GA-22

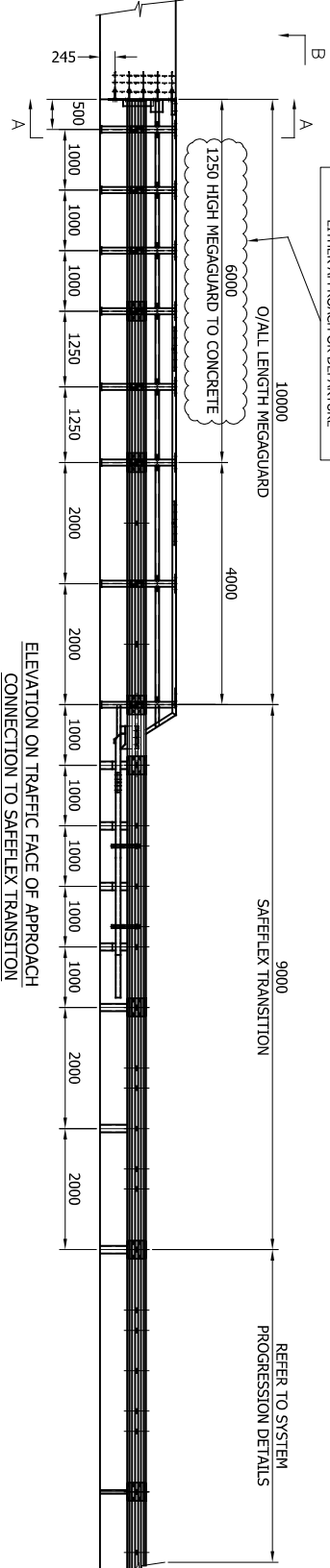
REV:
06

MINIMUM DEPARTURE LENGTH = 8.0m
10.0m SHOWN TO ACCOMMODATE USE OF
STANDARD COMPONENTS



SECTION B-B
(PLAN VIEW ON CONNECTION TO SAFEFLEX TRANSITION)

SCALE: 1:120

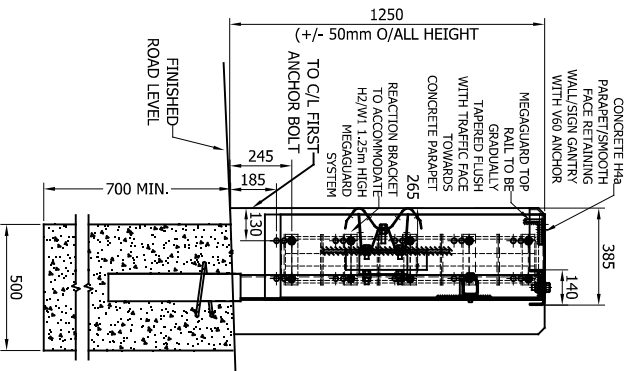


ELEVATION ON TRAFFIC FACE OF APPROACH
CONNECTION TO SAFEFLEX TRANSITION

SCALE: 1:120

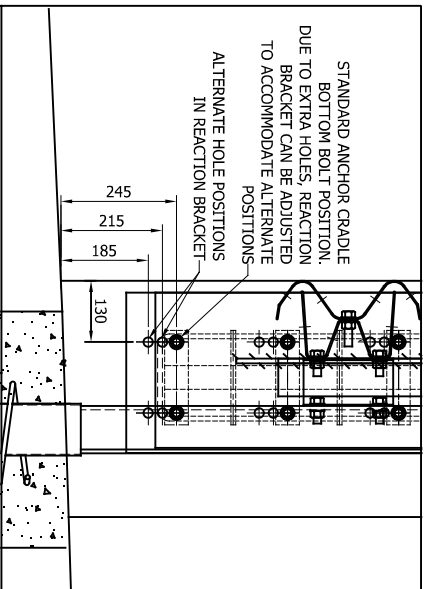
MEGAGUARD ARRANGEMENT SHOWN WITH
SOCKETED POSTS, CAN ALSO BE BASEPLATED

SEE UK 27460 & UK 27461 FOR FURTHER DETAILS
OF MEGAGUARD CONNECTION TO SAFEFLEX TRANSITION



SECTION A-A

SCALE: 1:30



FURTHER DETAIL OF ANCHORAGE &
REACTION BRACKET HOLES

SCALE: 1:16

GENERAL NOTES:

1. ALL DIMENSIONS IN MILLIMETRES UNLESS NOTED OTHERWISE.
2. CONNECTION APPLICABLE TO: CONCRETE H4a PARAPET, SMOOTH FACE RETAINING WALL OR SIGN GANTRY.
3. FOR DETAILS OF STRUCTURE ANCHORAGE, ITEM V60, SEE DRG. NO. 58/155.
4. MEGAGUARD TOP RAIL TO BE TAPERED TO BE FLUSH WITH TRAFFIC FACE AT END OF MEGAGUARD & CONCRETE PARAPET. DESIGN TBD.
5. ARRANGEMENT & REACTION BRACKET SUITABLE FOR 1.25m MIN. O/ALL HEIGHT MEGAGUARD SYSTEM.
6. FOR FURTHER DETAILS ON CONNECTION OF MEGAGUARD TO SAFEFLEX TRANSITION, PLEASE SEE UK 27460 & UK 27461

REV	DATE	DETAILS	INITIAL
08	25.11.24	TRANSITION UPGRADED TO SAFEFLEX	H.B
07	19.07.22	SECTION A-A NOTE CHANGED	A.D
06	22.03.22	MEGAGUARD LENGTH REVISED	M.T
05	22.02.22	NOTES ADDED	M.T
04	12.01.22	TITLE BLOCK REVISED	A.D
03	23.07.21	POST SPACING REVISED	A.D
02	25.05.21	DETAILS REVISED	M.T
01	22.02.21	REACTION BRACKET REVISED	M.T
00	07.05.20	DRAWING CREATED	M.T

Megaguard

H2 W1

1.25m CONNECTION TO CONCRETE
INTO SAFEFLEX TRANSITION
DEPARTURE / RIGHT HAND
SOCKETED GENERAL ARRANGEMENT



CONCORD HOUSE,
BESSEMER WAY, SCUNTHORPE,
NORTH LINCOLNSHIRE, DN15 8XE
t: 01774 289119

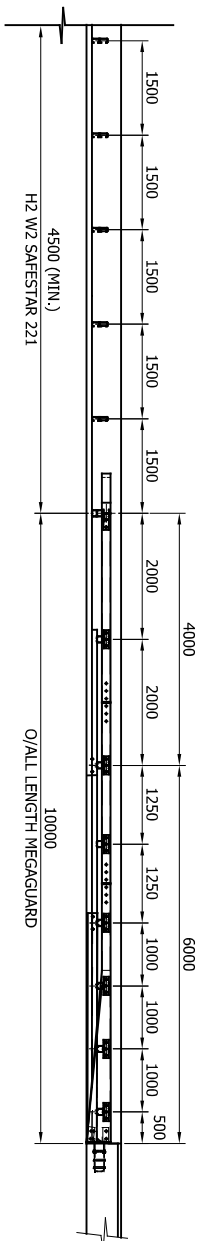
FOR TECHNICAL ASSISTANCE CONTACT
e: john.cudlipp@saferoad.co.uk

DRAWING NUMBER:

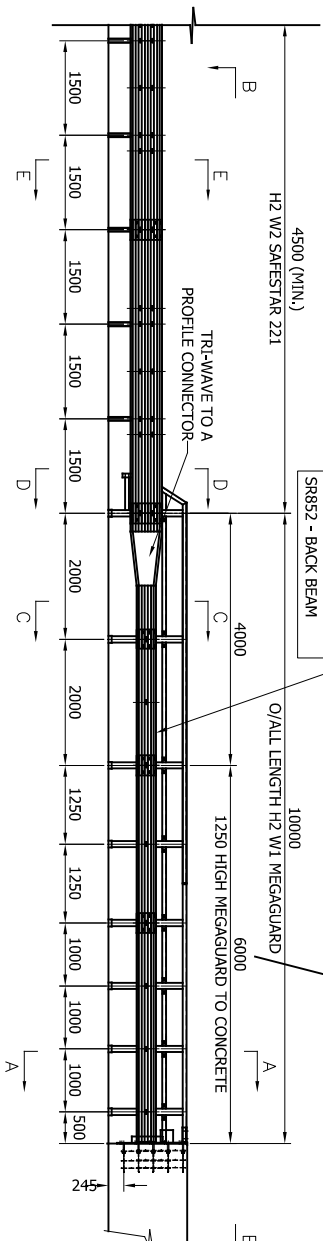
H2W1-GA-23

REV:

08

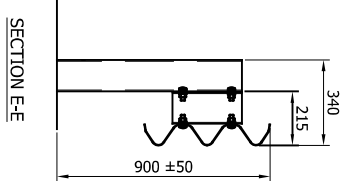
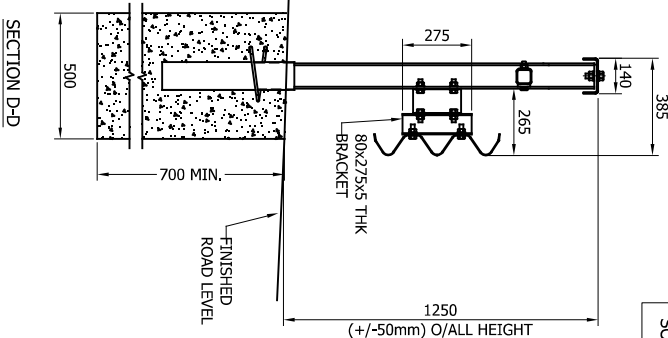
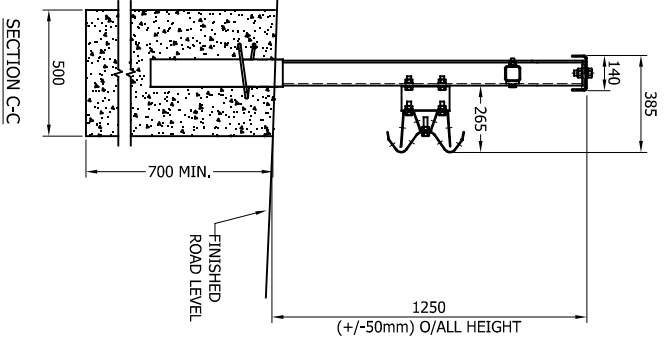
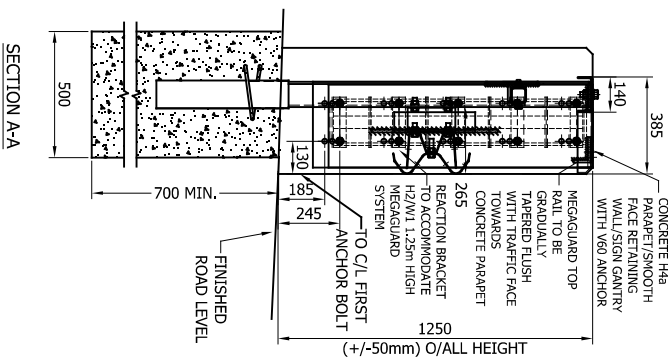


PLAN VIEW



ELEVATION ON TRAFFIC FACE APPROACH CONNECTION

MEGAGUARD ARRANGEMENT SHOWN WITH SOCKETED POSTS, CAN ALSO BE BASEPLATED



- GENERAL NOTES:**
- ALL DIMENSIONS IN MILLIMETRES UNLESS NOTED OTHERWISE.
 - CONNECTION APPLICABLE TO: CONCRETE H49 PARAPET, SMOOTH FACE RETAINING WALL OR SIGN GANTRY.
 - FOR DETAILS OF STRUCTURE ANCHORAGE ITEM V60, SEE DRG. No. 59/155.
 - MEGAGUARD TOP RAIL TO BE TAPERED TO BE FLUSH WITH TRAFFIC FACE AT END OF MEGAGUARD & CONCRETE PARAPET. DESIGN TBD.
 - ARRANGEMENT & REACTION BRACKET SUITABLE FOR 1.25m (+/-50mm) O/ALL HEIGHT MEGAGUARD SYSTEM.
 - FOR GENERAL DETAILS OF H2 W3 SAFESTAR 231 SEE DRG. NO. H2W3-GA-01.

REV#	DATE	DETAILS	INITIAL
07	17.06.24	LENGTH OF MEGAGUARD REDUCED	H.B
06	29.11.22	DIMENSION ADDED TO SECTION E-E	A.D
05	19.07.22	SECTION A-A NOTE CHANGED	A.D
04	22.02.22	NOTES ADDED	M.T
03	12.01.22	TITLE BLOCK REVISED	A.D
02	19.10.21	SECTIONS C-C, D-D ALTERED	A.D
01	08.10.21	SECTIONS A-A, B-B & C-C ALTERED	A.D
00	14.06.21	DRAWING CREATED	M.T

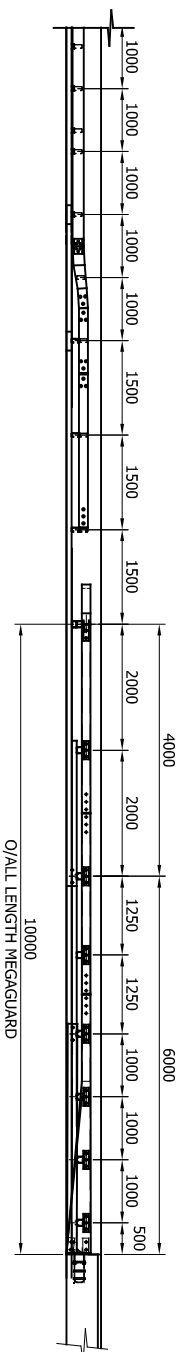
Megaguard
H2 W1
 1.25m CONNECTION TO CONCRETE INTO SYSTEM PROGRESSION FROM H2-W1 TO H2-W3 SAFESTAR 231



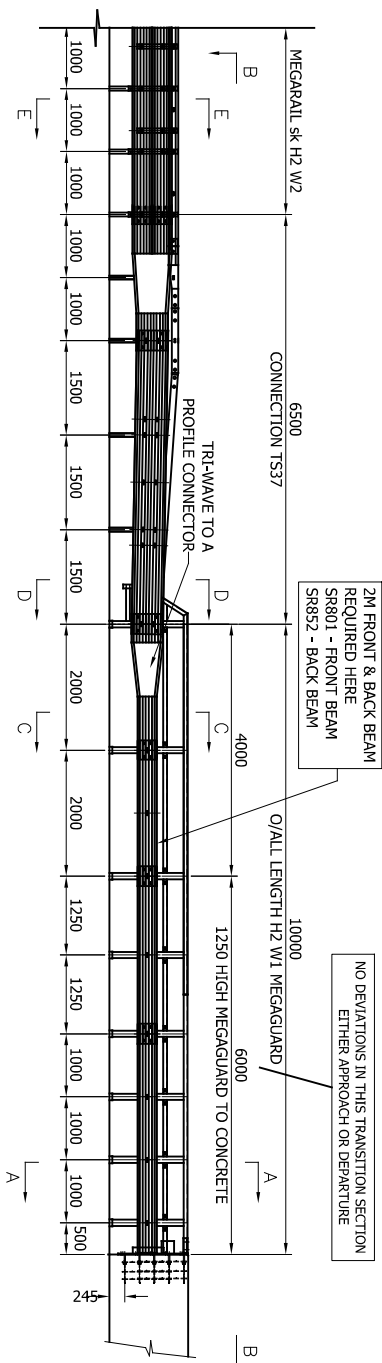
CONCORD HOUSE,
 BESSEMER WAY, SCUNTHORPE,
 NORTH LINCOLNSHIRE, DN15 8XE
 t: 01774 289119
 FOR TECHNICAL ASSISTANCE CONTACT
 e: john.cudlipp@saferoad.co.uk

H2W1-GA-25

07

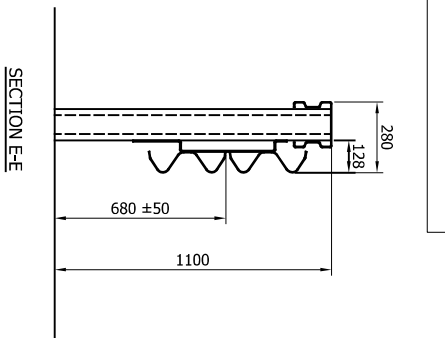
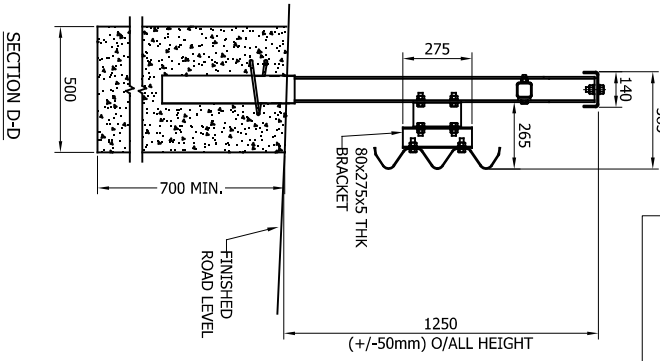
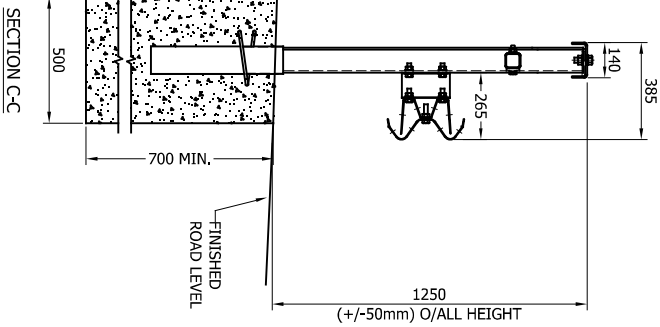
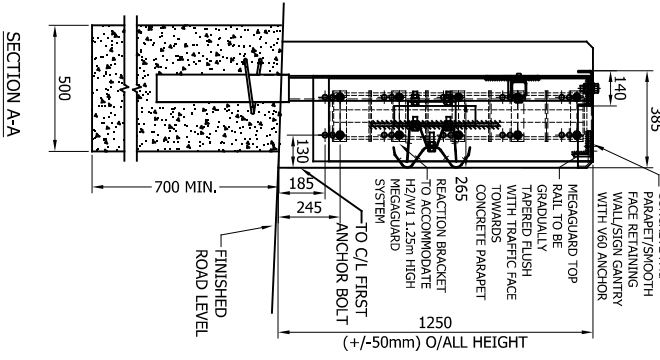


PLAN VIEW



ELEVATION ON TRAFFIC FACE APPROACH CONNECTION

MEGAGUARD ARRANGEMENT SHOWN WITH SOCKETED POSTS. CAN ALSO BE BASEPLATED



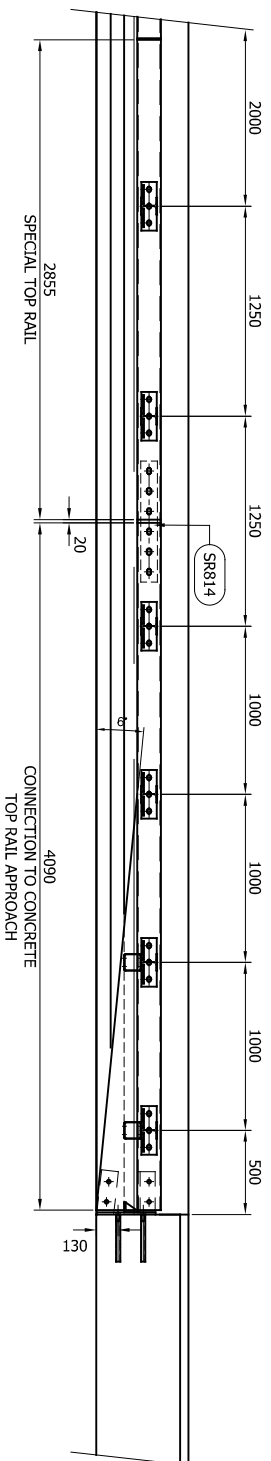
- GENERAL NOTES:**
1. ALL DIMENSIONS IN MILLIMETRES UNLESS NOTED OTHERWISE.
 2. CONNECTION APPLICABLE TO: CONCRETE H4a PARAPET, SMOOTH FACE RETAINING WALL OR SIGN GANTRY.
 3. FOR DETAILS OF STRUCTURE ANCHORAGE, ITEM V60, SEE DRG. No. SB/155.
 4. MEGAGUARD TOP RAIL TO BE TAPERED TO BE FLUSH WITH TRAFFIC FACE AT END OF MEGAGUARD & CONCRETE PARAPET. DESIGN TBD.
 5. ARRANGEMENT & REACTION BRACKET SUITABLE FOR 1.25m (+/-50mm) O/ALL HEIGHT MEGAGUARD SYSTEM.
 6. FOR GENERAL DETAILS OF H2 W2 MEGARAIL SK SEE DRG. No. H2W2-GA-01.

REV	DATE	DETAILS	INITIAL
07	17.06.24	LENGTH OF MEGAGUARD REDUCED DIMENSION ADDED TO SECTION E-E	H.B
06	29.11.22		A.D
05	19.07.22	SECTION A-A NOTE CHANGED	A.D
04	22.02.22	NOTES ADDED	M.T
03	12.01.22	TITLE BLOCK REVISED	A.D
02	19.10.21	SECTIONS C-C & D-D ALTERED	A.D
01	08.10.21	SECTIONS A-A, B-B & C-C ALTERED	A.D
00	14.06.21	DRAWING CREATED	M.T

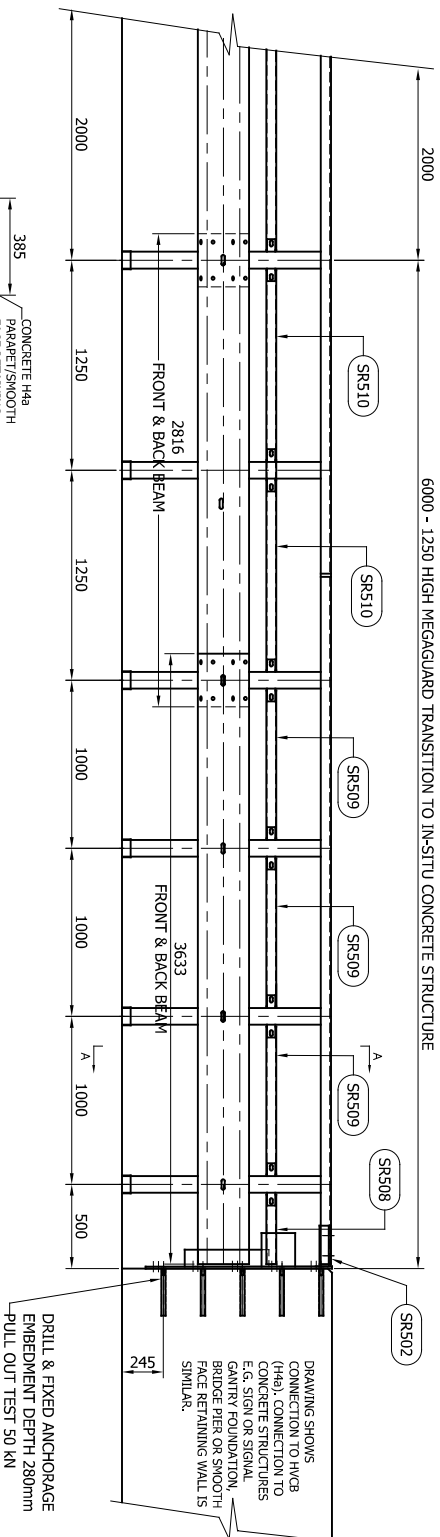
Megaguard
H2 W1
 1.25m CONNECTION TO CONCRETE INTO SYSTEM PROGRESSION FROM H2-W1 TO H2-W2 MEGARAIL SK



CONCORD HOUSE,
 BESSEMER WAY, SCUNTHORPE,
 NORTH LINCOLNSHIRE, DN15 8XE
 T: 01724 289119
 FOR TECHNICAL ASSISTANCE CONTACT
 e: john.cudlipp@saferoad.co.uk

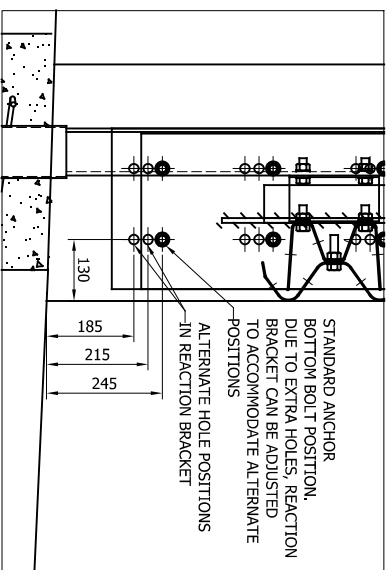
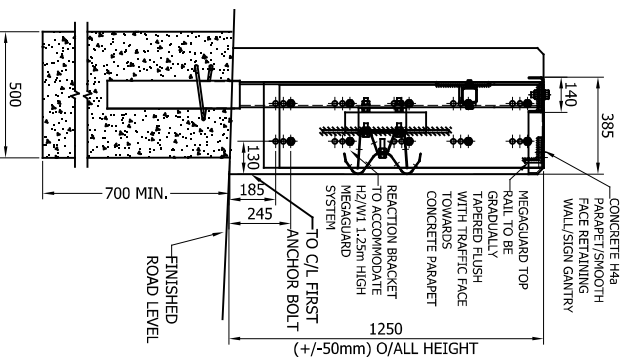


NO DEVIATIONS IN THIS TRANSITION SECTION
EITHER APPROACH OR DEPARTURE



DRILL & FIXED ANCHORAGE
EMBEDMENT DEPTH 280mm
PULL OUT TEST 50 kN

MEGAGUARD ARRANGEMENT SHOWN WITH SOCKETED
POSTS. POSTS CAN ALSO BE BASEPLATED



SECTION A-A
SCALE: 1:30

FURTHER DETAIL OF ANCHORAGE &
REACTION BRACKET HOLES
SCALE: 1:16

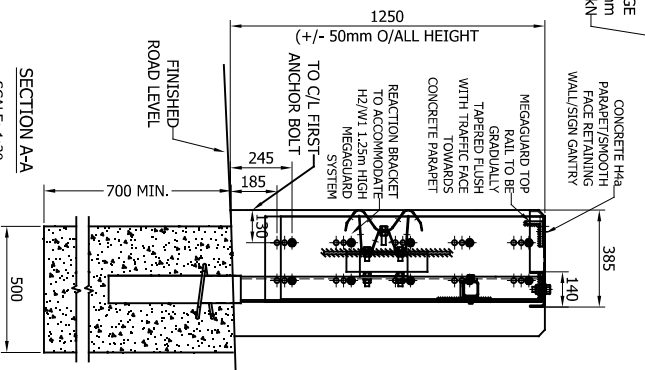
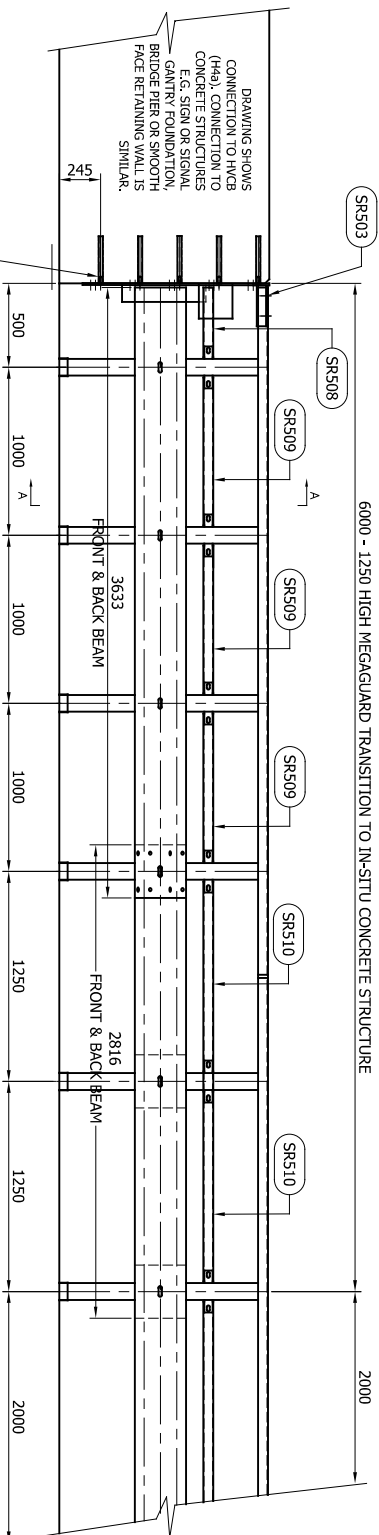
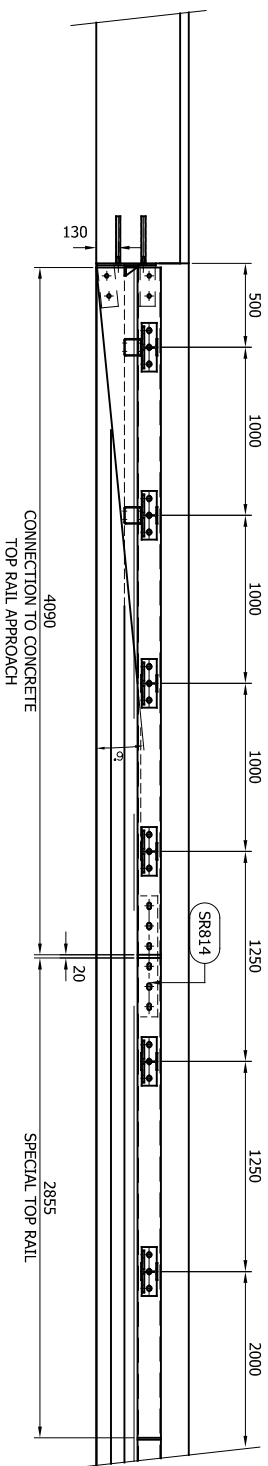
- GENERAL NOTES:**
1. ALL DIMENSIONS IN MILLIMETRES UNLESS NOTED OTHERWISE.
 2. CONNECTION APPLICABLE TO: CONCRETE H4a PARAPET, SMOOTH FACE RETAINING WALL OR SIGN GANTRY.
 3. DRILL & FIX ANCHORS INTO CONCRETE H4a TO BE SSR-VDI M16 x 280 INTERNALLY THREADED CHEMICAL ANCHORS SOCKETS, C/W GLASS RESIN CAPSULES. 28 DIA. x 280 DRILLING DEPTH REQ'D
 4. MEGAGUARD TOP RAIL TO BE TAPERED TO BE FLUSH WITH TRAFFIC FACE AT END OF MEGAGUARD & CONCRETE PARAPET. DESIGN TBD.
 5. TOTAL LENGTH OF BARRIER TO BE AS CD377 & LENGTH OF NEED DRAWING MR-GA-043.
 6. ARRANGEMENT & REACTION BRACKET SUITABLE FOR 1.25m MIN. O/ALL HEIGHT MEGAGUARD SYSTEM.

REV	DATE	DETAILS	INITIAL
00	29.07.22	DRAWING CREATED	M.T
01	29.11.24	LOGO UPDATED	H.B
02	21.01.25	ANCHOR DEPTH UPDATED	H.B

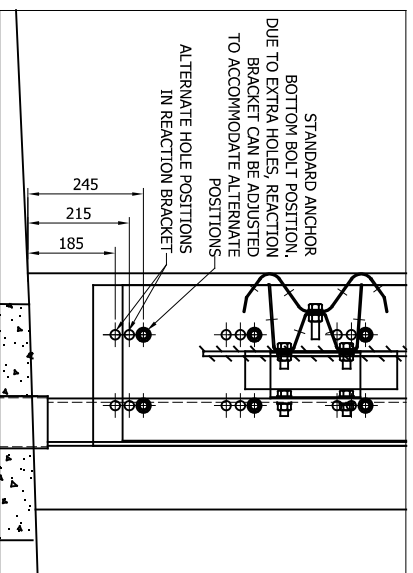
Megaguard
H2 W1 VI 1
1.25m CONNECTION TO CONCRETE
STRUCTURE (DRILL & FIX)
APPROACH / LEFT HAND
SOCKETED GENERAL ARRANGEMENT



CONCORD HOUSE,
BESSEMER WAY, SCUNTHORPE,
NORTH LINCOLNSHIRE, DN15 8XE
T: 01724 289119
FOR TECHNICAL ASSISTANCE CONTACT
e: john.cudlipp@saferoad.co.uk



MEGAGUARD ARRANGEMENT SHOWN WITH SOCKETED POSTS. POSTS CAN ALSO BE BASEPLATED



FURTHER DETAIL OF ANCHORAGE & REACTION BRACKET HOLES

SCALE:1:16

GENERAL NOTES:

- ALL DIMENSIONS IN MILLIMETRES UNLESS NOTED OTHERWISE.
- CONNECTION APPLICABLE TO: CONCRETE H4a PARAPET, SMOOTH FACE RETAINING WALL OR SIGN GANTRY.
- DRILL & FIX ANCHORS INTO CONCRETE H4a TO BE SSR-VDI M16 x 280 INTERNALLY THREADED CHEMICAL ANCHORS SOCKETS, C/W GLASS RESIN CAPSULES. 28 DIA. x 280 DRILLING DEPTH REQ'D
- MEGAGUARD TOP RAIL TO BE TAPERED TO BE FLUSH WITH TRAFFIC FACE AT END OF MEGAGUARD & CONCRETE PARAPET. DESIGN TBD.
- TOTAL LENGTH OF BARRIER TO BE AS CD377 & LENGTH OF NEED DRAWING MR-GA-043.
- ARRANGEMENT & REACTION BRACKET SUITABLE FOR 1.25m MIN. O/ALL HEIGHT MEGAGUARD SYSTEM.

REV	DATE	DETAILS	INITIAL
02	21.01.25	ANCHOR DEPTH UPDATED	H.B
01	29.11.24	LOGO UPDATED	H.B
00	29.07.22	DRAWING CREATED	M.T

Megaguard H2 W1 VI 1

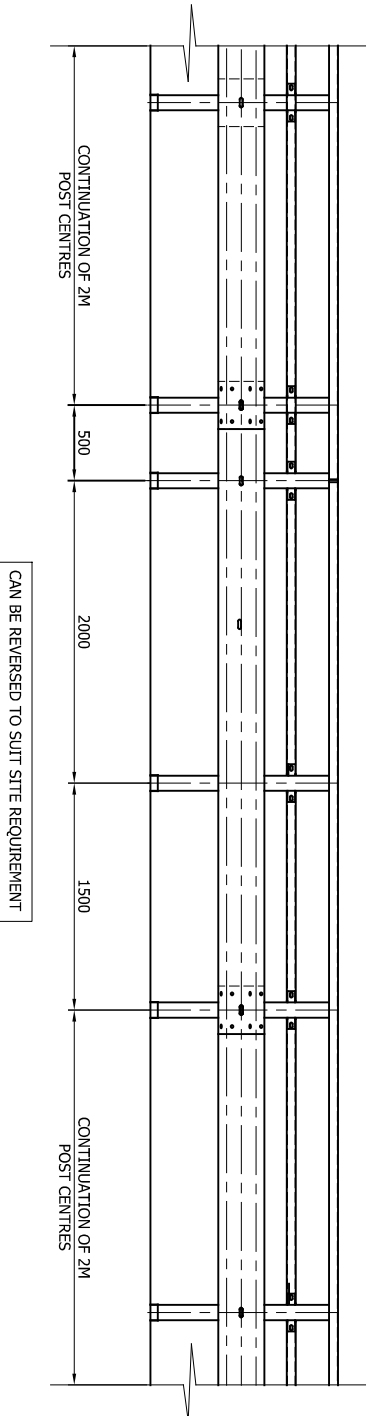
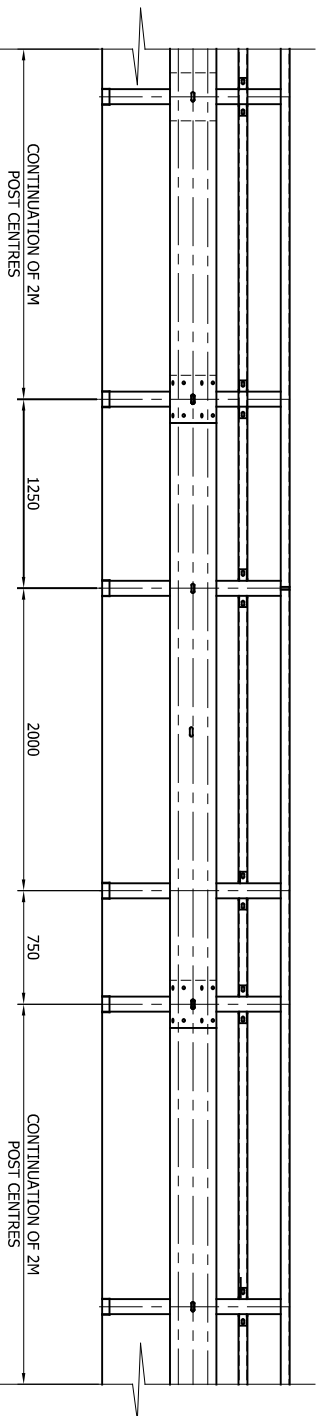
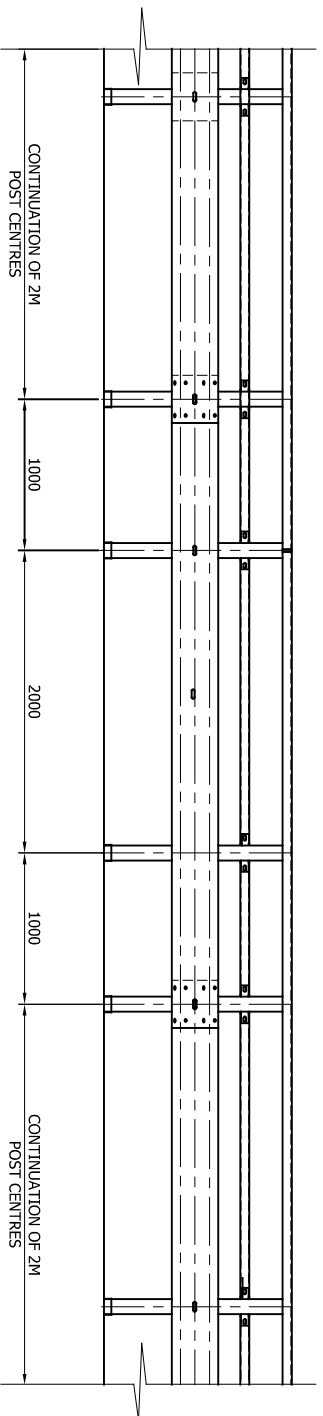
1.25m CONNECTION TO CONCRETE STRUCTURE (DRILL & FIX) DEPARTURE / RIGHT HAND SOCKETED GENERAL ARRANGEMENT



CONCORD HOUSE,
BESSEMER WAY, SCUNTHORPE,
NORTH LINCOLNSHIRE, DN15 8XE
t: 01724 289119
FOR TECHNICAL ASSISTANCE CONTACT
e: john.cudlipp@saferoad.co.uk

DRAWING NUMBER: H2W1-GA-28

REV: 02



CAN BE REVERSED TO SUIT SITE REQUIREMENT

CAN BE REVERSED TO SUIT SITE REQUIREMENT

REV#	DATE	DETAILS	INITIAL
02	29.11.24	LOGO UPDATED	A.D
01	27.06.22	NOTES CHANGED	A.D
00	22.02.22	DRAWING CREATED	M.T

MegaGuard
H2 W1 VI 3
 POST CENTRE DEVIATIONS
 H2/W1 MEGAGUARD



CONCORD HOUSE,
 BESSEMER WAY, SCUNTHORPE,
 NORTH LINCOLNSHIRE, DN15 8XE
 t: 01724 289119
 FOR TECHNICAL ASSISTANCE CONTACT
 e: john.cudlipp@saferoad.co.uk

H2W1-GA-40

REV# 02

DRAWING NUMBER: